



EMAIL: FILTRATION@JOHNBROOKS.CA

DPW 600 SERIES HIGH TEMP PLEATED BAG FILTERS

DPW600-002-05-15

COST EFFECTIVE FILTRATION

HART introduces its DPW-600 Bag filter element that is designed for high temperature applications or applications with hydrocarbons in the stream.

Combining this design with the technique of pleating several different filter media together in a single pleat pack maximizes dirt holding capacity.

The HART 600 DPW Series bag is designed to seal inside Rosedale bag housings without equipment modification. It is available with different filter media options to meet industry standards and chemical compatibility.

BENEFITS

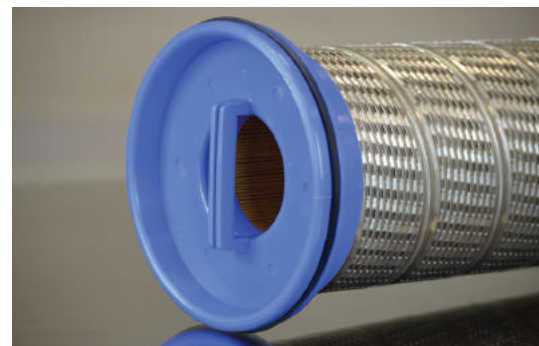
- Provides significantly greater dirt holding than standard non-pleated bag filters
- High Temperature bag filter applications
- Excellent for bag filter applications with hydrocarbons in the stream
- Simple installation and extraction makes this an operator friendly element
- Unlike standard bag filters, this element drains minimizing residual fluid in the filter housing
- O-ring seal to ensure positive capture of contaminants
- Fixed pore media prevents particle unloading
- Absolute Rated media for reliable results in any critical application

COMMON APPLICATIONS

- High temperature fluids, glycols, fuels, process fluids, various hydrocarbons, biofuels, organic solvents, produced water, disposal water

DIMENSIONS

Outside Diameter: 6.00"
 Inside Diameter: 3.00"
 Length: 26"



MATERIALS OF CONSTRUCTION

Filter Media:	Cellulose, Micro-fiberglass, Nylon
Potting Material:	High Temperature Epoxy
Support:	Tinned Steel Can Body
End Caps:	Nylon

PRODUCT SPECIFICATIONS

Micron Ratings @ 99.98% (beta 5000):
0.5, 2, 5, 10, 20, 40, and 70 micron

Maximum Operating Conditions:
275°F (135°C) continuous operating temperature

Recommended Flow Rate for Optimal Dirt Loading: 25 GPM

Maximum Recommended Flow Rate: 100 GPM per standard 26" filter

Recommended Differential Pressure for change-out: 25 PSID

MEDIA MICRON RATING AT EFFICIENCY

FILTER MODEL	600	601	603	605	607	608	609
99.00% (beta 100)	0.3	1	2	5	10	25	40
99.98% (beta 5000)	0.5	2	5	10	20	40	70

DIRT HOLDING CAPACITY (LBS)* Based on standard 26" filter element

FILTER MODEL	600	601	603	605	607	608	609
Pounds of Solids	4.3	5.1	6.0	6.0	6.8	7.7	8.3

CLEAN PRESSURE DROP (PSID)* Based on standard 26" filter element

FILTER MODEL	600	601	603	605	607	608	609
PSID @ 25 GPM	0.55	0.45	0.36	0.30	0.26	0.21	0.19
PSID @ 50 GPM	1.03	0.62	0.51	0.43	0.35	0.30	0.26

CARTRIDGE CODING

DPW	600	N	P	26	P	E
DPW SERIES	MICRON RATING @ 99.98%	END CAP	MEDIA	LENGTH	CAP STYLE	SEAL MATERIAL
	600 - 0.5 Micron 601 - 2 Micron 603 - 5 Micron 605 - 10 Micron 607 - 20 Micron 608 - 40 Micron 609 - 70 Micron	N - Nylon	C - Cellulose G - Glass N - Nylon	26 - 26"	1 - Rosedale	B - Buna-N E - EPDM V - Viton®

Notice: The information presented here is based on tests and data which JOHN BROOKS COMPANY believes to be reliable, but their accuracy or completeness is not guaranteed. JOHN BROOKS COMPANY MAKES NO WARRANTIES, EXPRESS OR IMPLIED, BUT NOT LIMITED TO, ANY IMPLIED WARRANTY OR MERCHANTABILITY OR FITNESS FOR A PARTICULAR PURPOSE. The determination of whether the JOHN BROOKS COMPANY product is fit for a particular purpose or application is the responsibility of the user.



DPW600-002-05-15 0119

1-877-624-5757
www.johnbrooks.ca