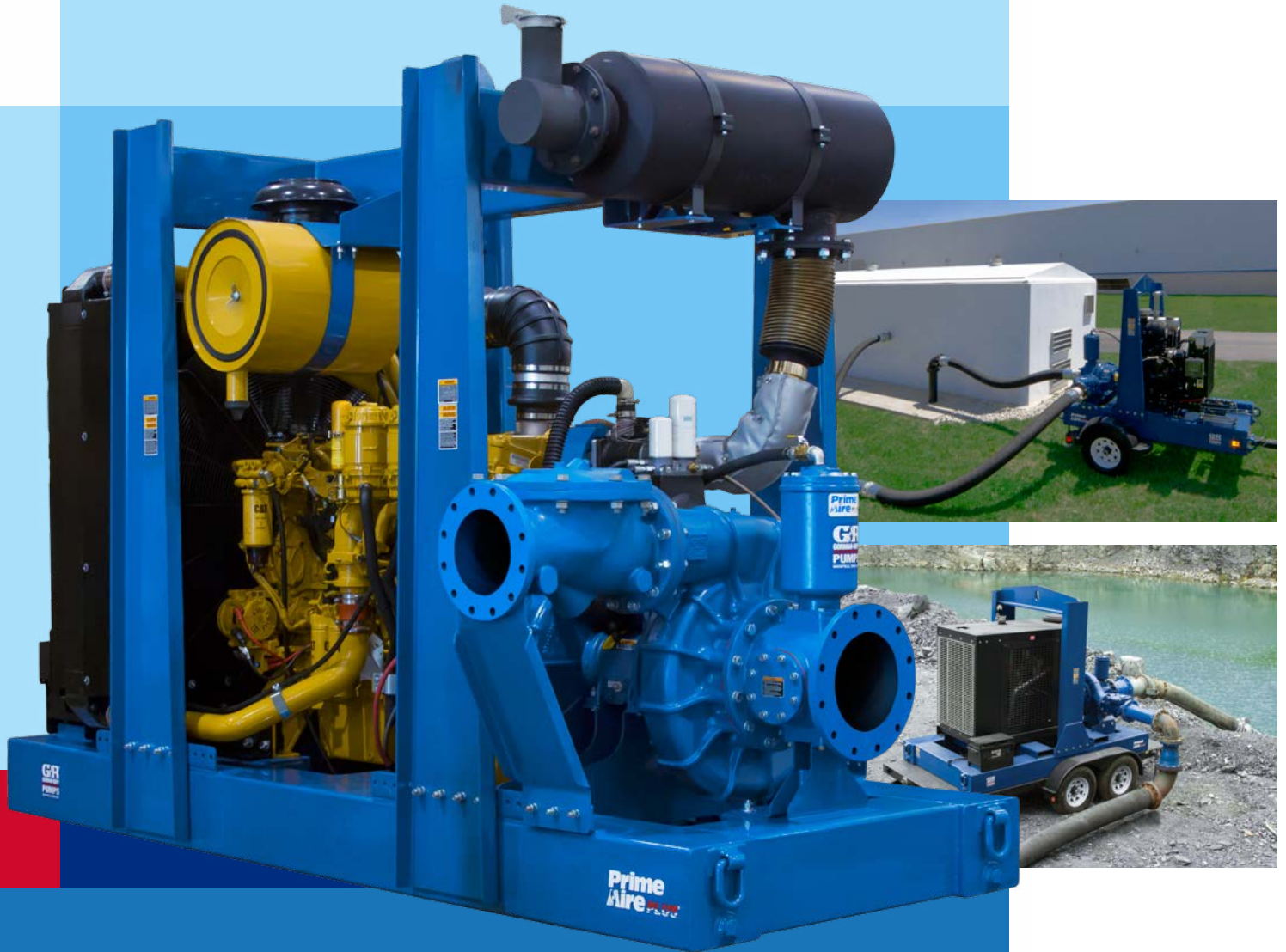


**Prime
Aire**®

**Prime
Aire PLUS**®

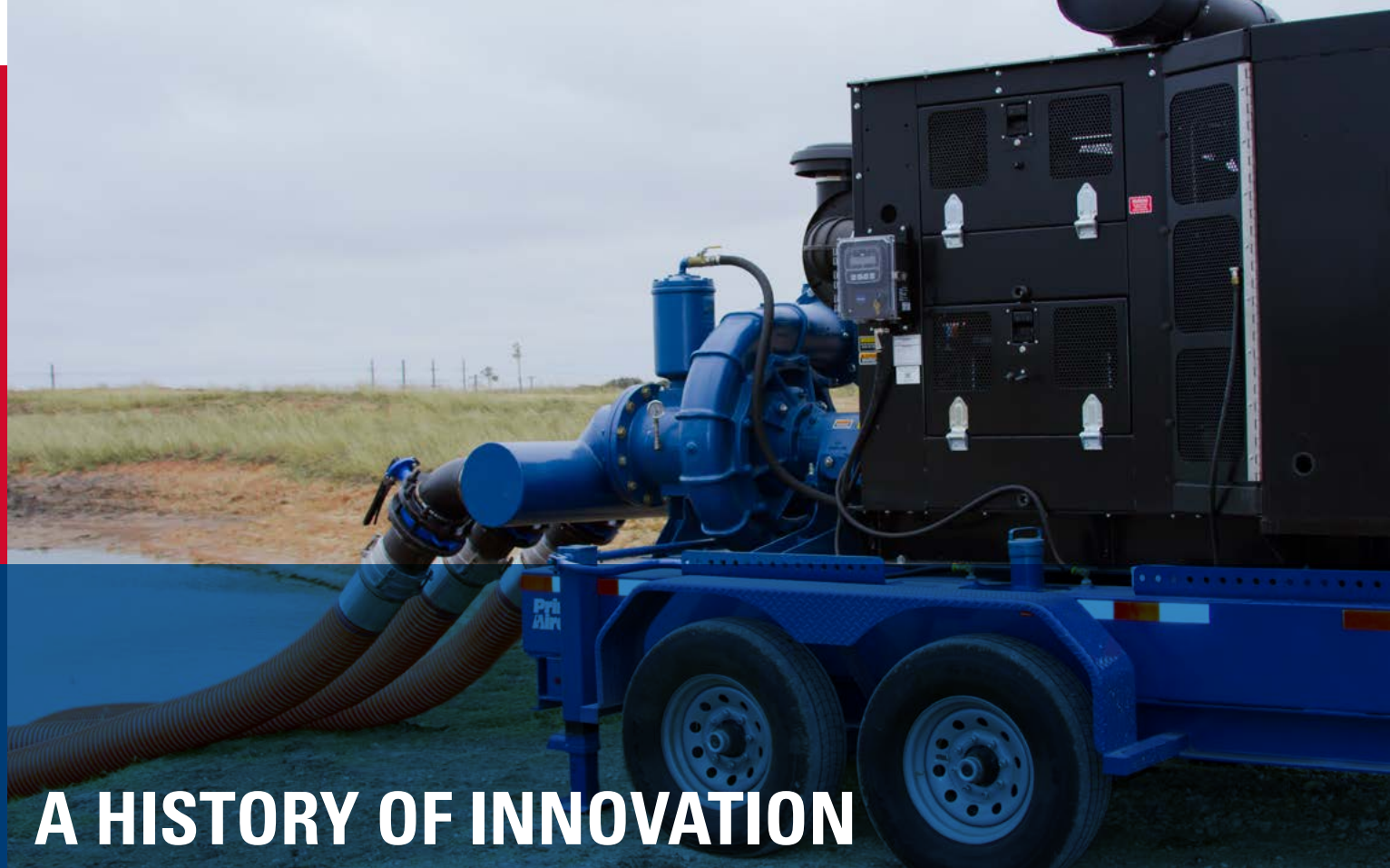


PRIME AIRE® & PRIME AIRE PLUS®

Priming Assisted Pumps

GR®
GORMAN-RUPP
PUMPS

The Pump People®



A HISTORY OF INNOVATION

Gorman-Rupp has been revolutionizing the pumping industry since 1933. Many of the innovations introduced by Gorman-Rupp over the years have become industry standards.

More than ever, we continue to update our factories, processes, research and development and engineering to ensure that our pumps and systems are among the most reliable and efficient in the world. One of our most successful and innovative lines of pumps has been our self-priming models.

Revolutionary improvements were made in 1963 with the introduction of our T Series® self-priming pumps. Since then, continuous improvements to head, flow and efficiency have been made.

In 1996 we introduced our Prime Aire® line of vacuum-/priming-assisted pumps for the construction industry.

Today, Gorman-Rupp priming-assisted pumps are a leading choice for contractors, municipalities and industrial operators throughout the world handling the toughest jobs from sewage bypass to large volume dewatering.

Gorman-Rupp's commitment to our original philosophy of innovation, continuous improvement, unparalleled quality and customer service continues to set us apart from others.

OUR PUMPS DELIVER DECADES OF PERFORMANCE AND VALUE

Gorman-Rupp is committed to meeting your fluid-handling requirements long after installation. The quality manufacturing and testing that go into every Prime Aire® and Prime Aire Plus® pump guarantee long-lasting, trouble-free operation. And we provide a five year warranty and fast parts service to back up our products and ensure your peace of mind.



Value

Prime Aire® and Prime Aire Plus® pumps boast some of the lowest lifecycle costs in the industry. Because of the quality manufacturing and testing that goes into every Gorman-Rupp product, you benefit from minimal service interruptions and some of the lowest maintenance in the industry. Gorman-Rupp delivers the best ROI by ensuring low operating costs for decades.

Parts And Service

When you need a replacement part for your Prime Aire or Prime Aire Plus pump, you'll have it fast. With tens of thousands of genuine Gorman-Rupp parts and pumps on hand, we fill and ship 99% of parts orders within 24 hours. Should your PA Series® or PAH Series® pump require service, our worldwide network of factory-trained distributors is ready to quickly respond to your needs. With just one number to call for parts and service, it's easy and convenient to keep your equipment performing as it should.

Peace Of Mind

At Gorman-Rupp, we don't just say our pumps are reliable. Unlike standard 90-day or one-year warranties, we guarantee every part and working component of a PA and PAH Series pump for a full two years. With Gorman-Rupp, reliable performance is always guaranteed.



Engine-driven models are available with high-speed wheel kit or DOT trailer with brakes and lighting kit.



PRIME AIRE® & PRIME AIRE PLUS®

Gorman-Rupp Priming-Assisted Pumps

Superior Performance

With a variety of sizes and operating ranges, Gorman-Rupp's extensive line of Prime Aire® and Prime Aire Plus® priming-assisted pumps are hard-working, dependable and ready to tackle the toughest applications including large solids and slurries.

So, whether it's your next sewage bypass operation or a construction site dewatering and remediation project, choose these versatile performers to move large volumes of water quickly...even when sticks, stones and other debris would normally present a problem.

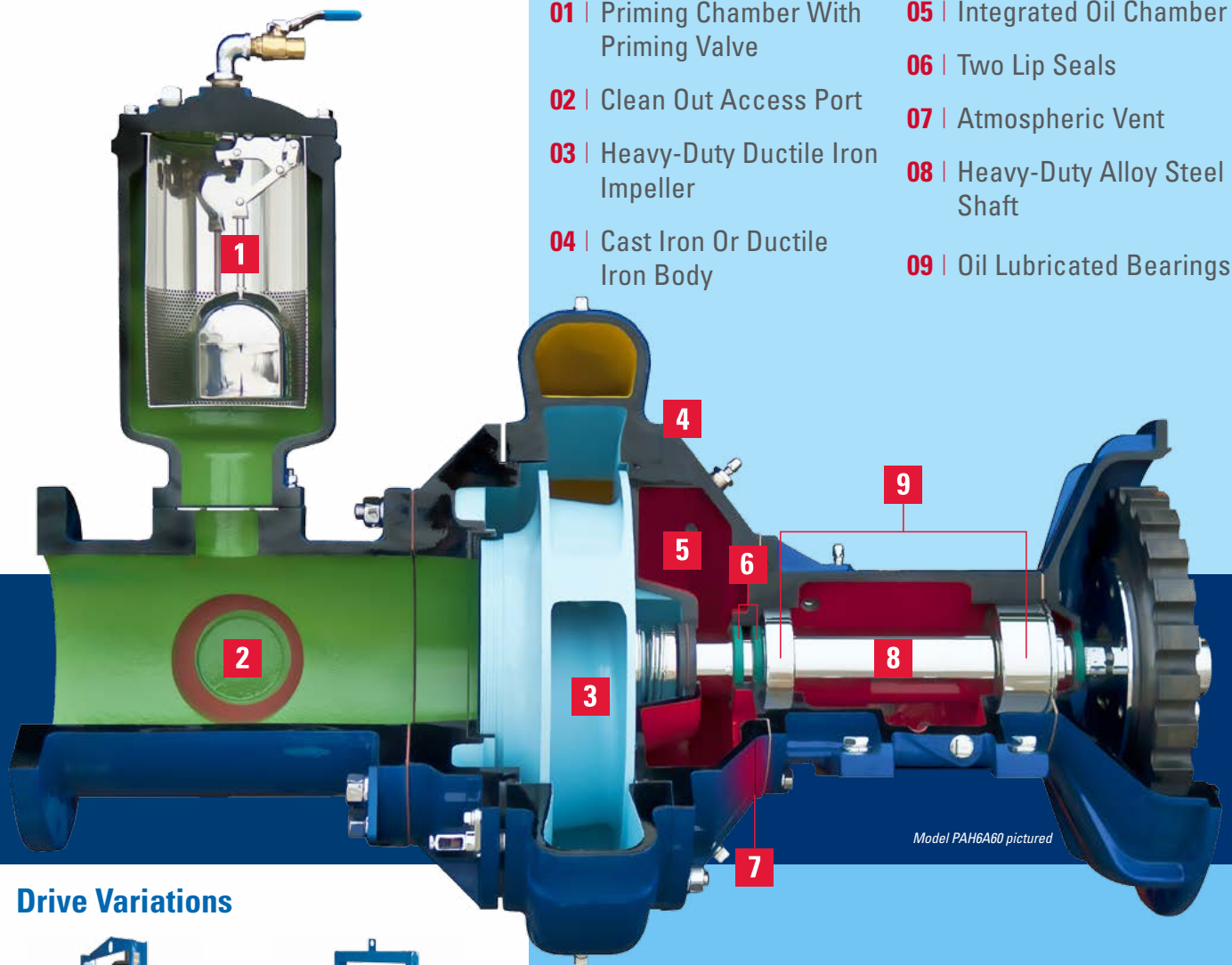


PA Series® Pumps

The Prime Aire system uses a venturi compressor priming chamber and priming valve which eliminates the leaks associated with traditional vacuum-assisted pumps. This unique system reduces environmental concerns on sewage bypass operations and also enables the pump to operate under flooded suction conditions without leaking. The positive priming capabilities of the PA Series® make it the perfect choice for applications where a large volume of air is in the liquid being pumped, there are intermittent flows or there are long or oversized suction lines.

PAH Series® Pumps

Prime Aire Plus pumps utilize the same venturi/compressor priming system as the Prime-Aire product line. Increased head, flow and enhanced maintenance features are additional benefits of the PAH Series® line. Models feature sizes up to 16" and are suitable for clear liquids and liquids containing large solids. All Prime Aire Plus pumps are configured for EPA Tier compliant engines or premium efficiency motors.



Model PAH6A60 pictured

- 01** | Priming Chamber With Priming Valve
- 02** | Clean Out Access Port
- 03** | Heavy-Duty Ductile Iron Impeller
- 04** | Cast Iron Or Ductile Iron Body
- 05** | Integrated Oil Chamber
- 06** | Two Lip Seals
- 07** | Atmospheric Vent
- 08** | Heavy-Duty Alloy Steel Shaft
- 09** | Oil Lubricated Bearings

Drive Variations



PA Series®
Engine driven
Shown with optional wheel kit



PA Series®
Electric driven



PAH Series®
Engine driven



PAH Series®
Electric driven



PA Series®
Sound attenuated



PA Series® & PAH Series®
Pump End



Specifications

Pump Size: 3" (75 mm), 4" (100 mm), 6" (150 mm), 10" (250 mm), 12" (300 mm), 14" (350 mm)
 Max. Capacity: 9950 GPM (627.8 lps)
 Max. Solids: 3.5" (88.9 mm)
 Max. Head: 420' (128.0 m)
 Materials of Construction: Cast Iron, Ductile Iron



Specifications

Pump Size: 3" (75 mm), 4" (100 mm), 6" (150 mm), 8" (200 mm), 10" (250 mm), 16" (400 mm)
 Max. Capacity: 15000 GPM (946.4 lps)
 Max. Solids: 4" (101.6 mm)
 Max. Head: 575' (175.3 m)
 Materials of Construction: Cast Iron



All PA Series® and PAH Series® pumps come standard with a two-year warranty.

A NEW STANDARD IN PRIMING-ASSISTED PERFORMANCE

Dry run capability is designed into the Gorman-Rupp unique priming-assisted system. An oversized, oil-lubricated seal allows the pump to run dry continuously without causing any damage.



For positive, reliable priming time after time, you can count on Gorman-Rupp Prime Aire® and Prime Aire Plus® pumps.

Air Compressor Over The Pump

Popular Prime Aire® and Prime Aire Plus® models are equipped with a “compressor-over-pump” arrangement. This innovative configuration option provides a self-contained, compact, flexible design and allows for ease of operation and service if necessary.



Impeller Selection

Priming-assisted pumps utilize a variety of impeller types based on your specific application. Many models feature rugged, two-vane, ductile iron, semi-open solids handling impellers that handle up to 4” (101.6 mm) diameter solids. For clean water applications, pump models use higher-efficiency enclosed impellers.

Auto-Start Controls

These controls allow the pump to turn on and off in response to fluctuating liquid levels. A state-of-the-art microprocessor-based digital engine control monitors all engine functions including alarms. The control panel features an easy-to-read 32-character display. It is ideal for conserving fuel, avoiding engine overhauls and comes standard on priming-assisted pump models.



Abrasive-Handling Seal

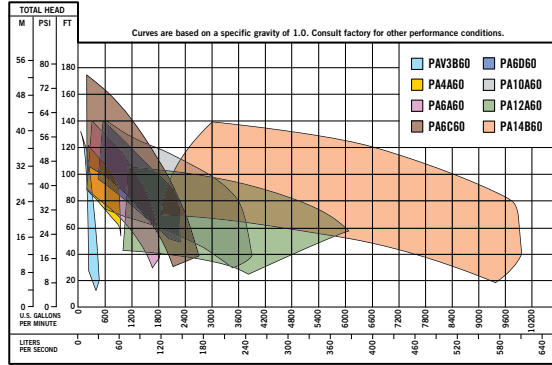
Most priming-assisted models use oversized, oil-lubricated mechanical seals that are specifically designed for abrasive and/or solids-handling service. Consult the factory for additional seal configurations.

Gorman-Rupp priming-assisted pumps are the perfect solution for applications where intermittent flow can be a problem. These pumps feature our positive priming system that allows the pumps to run dry continuously without causing damage. The priming system virtually eliminates leaks, reducing environmental concerns and giving the unique capability to operate under flooded-suction staging conditions.

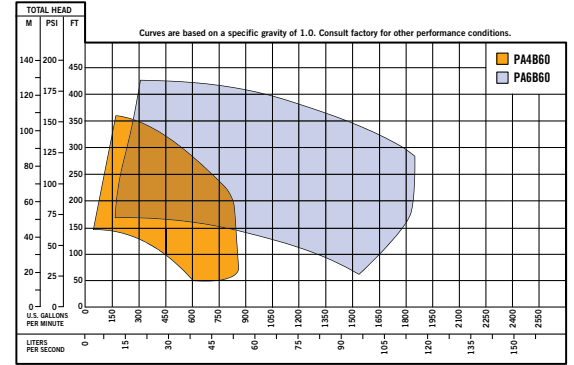
GORMAN-RUPP PRIMING-ASSISTED PUMPS

Pump Performance Data

PA Series® – Solids-Handling



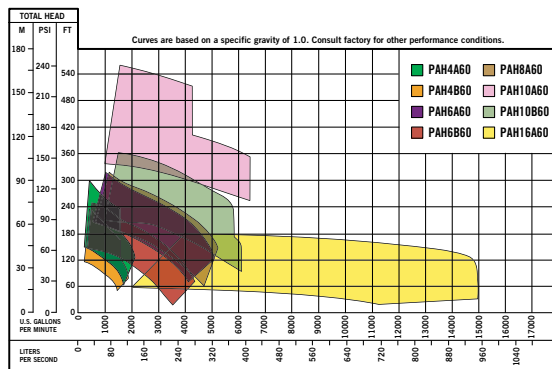
PA Series® – High-Head



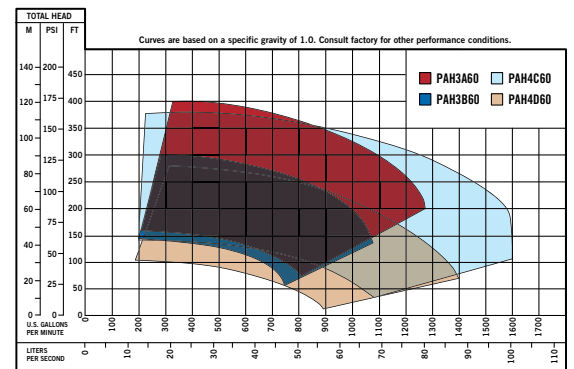
MODEL	PUMP SIZE (SUC. X DIS.)	MAX. CAPACITY	MAX. HEAD	MAX. SOLIDS
PAV3B60	3" x 3" (75 mm x 75 mm)	450 GPM (28.3 lps)	136' (41.4 m)	3" (76.2 mm)
PA4A60	4" x 4" (100 mm x 100 mm)	930 GPM (58.6 lps)	134' (40.8 m)	3" (76.2 mm)
PA4B60	6" x 4" (150 mm x 100 mm)	850 GPM (53.6 lps)	360' (109.7 m)	.41" (10.4 mm)
PA6A60	6" x 6" (150 mm x 150 mm)	1810 GPM (114.1 lps)	150' (45.7 m)	3" (76.2 mm)
PA6B60	6" x 6" (150 mm x 150 mm)	1900 GPM (119.8 lps)	420' (128.0 m)	.69" (17.5 mm)
PA6C60	6" x 6" (150 mm x 150 mm)	2700 GPM (170.3 lps)	195' (59.4 m)	3" (76.2 mm)
PA6D60	6" x 6" (150 mm x 150 mm)	2300 GPM (145.1 lps)	155' (47.2 m)	3" (76.2 mm)
PA10A60	10" x 10" (250 mm x 250mm)	3900 GPM (246.0 lps)	150' (45.7 m)	3.25" (82.6 mm)
PA12A60	12" x 12" (300 mm x 300 mm)	6320 GPM (398.7 lps)	110' (33.5 m)	3" (76.2 mm)
PA14B60	14" x 14" (350 mm x 350 mm)	9950 GPM (627.7 lps)	155' (47.2 m)	3.5" (88.9 mm)

*Dual-side suction capability featuring a removable coverplate and adjustable/replaceable wearplate.

PAH Series® – Solids-Handling



PAH Series® – Clear Liquid-Handling



MODEL	PUMP SIZE (SUC. X DIS.)	MAX. CAPACITY	MAX. HEAD	MAX. SOLIDS
PAH3A60	6" x 3" (150 mm x 75 mm)	1275 GPM (80.4 lps)	400' (121.9 m)	.5" (12.7 mm)
PAH3B60	6" x 3" (150 mm x 75 mm)	1080 GPM (68.1 lps)	300' (91.4 m)	.5" (12.7 mm)
PAH4A60	6" x 4" (150 mm x 100 mm)	2200 GPM (138.8 lps)	310' (94.5 m)	3" (76.2 mm)
PAH4B60	6" x 4" (150 mm x 100 mm)	1900 GPM (119.8 lps)	245' (74.6 m)	3" (76.2 mm)
PAH4C60	6" x 4" (150 mm x 100 mm)	1600 GPM (100.9 lps)	380' (115.8 m)	.5" (12.7 mm)
PAH4D60	6" x 4" (150 mm x 100 mm)	1450 GPM (91.4 lps)	285' (86.8 m)	.5" (12.7 mm)
PAH6A60	10" x 6" (250 mm x 150 mm)	5100 GPM (321.8 lps)	355' (108.2 m)	3" (76.2 mm)
PAH6B60	10" x 6" (250 mm x 150 mm)	4450 GPM (280.7 lps)	250' (76.2 m)	3" (76.2 mm)
PAH8A60	10" x 8" (250 mm x 200 mm)	5250 GPM (331.2 lps)	340' (103.6 m)	3" (76.2 mm)
PAH10A60	12" x 10" (300 mm x 250 mm)	6400 GPM (403.8 lps)	575' (175.3 m)	2" (50.8 mm)
PAH10B60	12" x 10" (300 mm x 250 mm)	6100 GPM (384.8 lps)	380' (115.8 m)	2" (50.8 mm)
PAH16A60	18" x 16" (450 mm x 400 mm)	15000 GPM (946.4 lps)	205' (65.2 m)	4" (101.6 mm)



FLUID-HANDLING EQUIPMENT DESIGNED WITH YOUR NEEDS IN MIND



★ Manufacturing Facilities

● Distribution Centers

Gorman-Rupp Pumps
Mansfield, Ohio, USA

Gorman-Rupp Canada
St. Thomas, Ontario, Canada

Gorman-Rupp Europe
Culemborg, Netherlands

Gorman-Rupp Africa
Cape Town, South Africa
Durban, South Africa
Johannesburg, South Africa (Headquarters)

Distribution Centers

Bangkok, Thailand
Dubai, United Arab Emirates
Grand Prairie, Texas, USA
Culemborg, Netherlands
Sparks, Nevada, USA

Engineering and manufacturing superiority has been the hallmark of Gorman-Rupp since our inception in 1933. Today we bring our products to life in some of the most efficient, modern and state-of-the-art manufacturing facilities in the world. Gorman-Rupp has a selection of nearly 3,000 pump models, and our world-class team of distributors has worked closely with thousands of end users around the world. We have the proven expertise and the resources to specify, manufacture, test and service your pump, and to ensure reliable performance for the long haul.



GORMAN-RUPP PUMPS

P.O. BOX 1217
MANSFIELD, OHIO 44901-1217 | USA
TEL: 419.755.1011 | FAX: 419.755.1251

GRPUMPS.COM



The Pump People