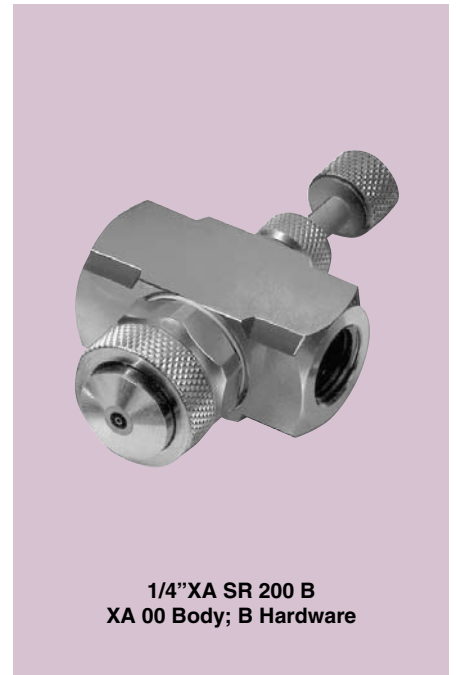
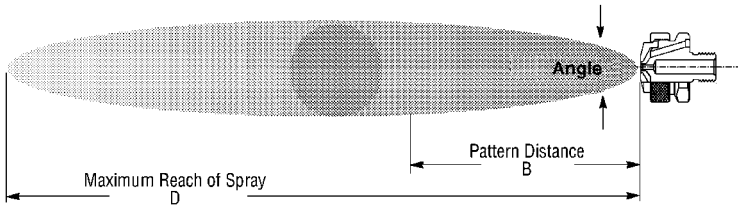


XASR

Siphon-fed Round

DESIGN FEATURES

- Lowest flow available
- Very fine atomization
- Narrow spray angle (12°- 22°)
- Full cone pattern
- Short to moderate forward spray projection



1/4"XA SR 200 B
XA 00 Body; B Hardware

Dimensions are approximate. Check with BETE for critical dimension applications.

XA SR Set-up Flow Rates and Dimensions

Siphon-fed, External Mix, Round Spray Pattern, 1/8" and 1/4" Pipe Sizes, BSP or NPT

Pipe Size	Spray Set-up Number	Fluid and Air Cap Numbers	ATOMIZING AIR		Liquid Capacity in l/h (Liters Per Hour)									Spray Dimensions at 200 mm. Siphon Height			
			Air (bar)	Air Capacity (Nm ³ /h)	Gravity Head			Siphon Height						Air (bar)	Spray Angle (deg.)	B (mm)	D (m)
					450 mm	300 mm	150 mm	100 mm	200 mm	300 mm	600 mm	900 mm					
1/8 or 1/4	SR 050	Fluid Cap FC7 & Air Cap AC 1201	0.7	0.66	1.5	1.3	1.1	0.9	0.7	0.5				0.7	18	280	1.8
			1.5	1.02	1.8	1.7	1.5	1.3	1.2	1.1	0.6			1.5	18	280	1.9
			3.0	1.68	2.1	1.9	1.7	1.5	1.4	1.3	1.1	0.8		3.0	18	300	2.3
			4.0	2.16	2.2	2.0	1.8	1.6	1.5	1.4	1.2	0.9	4.0	18	360	2.6	
		SR 150	Fluid Cap FC4 & Air Cap AC1201	0.7	0.78	24	2.1	1.7	1.5	1.2	0.8			0.7	18	300	2.1
	1.5			1.20	2.8	2.6	2.4	2.1	1.9	1.6	0.9		1.5	18	330	2.3	
3.0	1.92			3.4	3.1	2.9	2.8	2.6	2.4	1.7	1.1		3.0	18	380	2.6	
		4.0	2.46	3.7	3.4	3.3	3.1	2.9	2.7	2.1	1.5	4.0	19	430	3.0		
	SR 200	Fluid Cap FC4 & Air Cap AC1202	0.7	1.38	2.5	2.3	2.0	1.6	1.4	1.1			0.7	18	300	2.4	
1.5			2.16	2.9	2.8	2.5	2.2	2.0	1.7	0.9		1.5	18	330	2.7		
3.0			3.48	3.4	3.3	3.2	2.9	2.8	2.5	1.9	1.2		3.0	19	380	3.4	
		4.0	4.44	3.7	3.6	3.5	3.4	3.3	3.0	2.5	2.0	4.0	20	430	4.0		
	SR 250	Fluid Cap FC3 & Air Cap AC1202	0.7	1.14	4.5	4.0	3.4	2.1	1.8	1.4			0.7	21	380	3.0	
1.5			1.86	5.3	4.9	4.4	3.5	2.9	2.7	1.8		1.5	21	410	3.4		
3.0			3.00	6.0	5.6	5.0	4.4	4.0	3.4	2.4	1.2		3.0	21	460	4.0	
		4.0	3.90	5.7	5.4	5.0	4.2	3.9	3.5	2.8	1.9	4.0	22	510	4.6		
	SR 400	Fluid Cap FC1 & Air Cap AC 1204	1.5	3.48	22	19.9	16.3	12.3	10.5	8.3	2.8		1.5	17	460	3.7	
3.0			5.28	25	23	19.5	16.7	14.2	11.5	6.4	2.8		3.0	18	510	4.3	
4.0			6.66	26	24	21	18.4	15.7	12.9	7.9	4.5	2.8		4.0	18	530	4.9
		5.6	8.82	26	24	22	19.7	17	14.6	9.8	6.1	5.6	19	580	5.5		
	SR 450	Fluid Cap FC5 & Air Cap AC 1205	2.0	8.64				27	22	16.8			2.0	20	510	6.7	
3.0			11.4				30	26	21	11.0		3.0	20	530	7.0		
4.0			14.4		43	40	31	28	23	8.3		4.0	21	580	7.6		
		5.6	18.9	44	42	39	31	28	24	16.7	8.3	5.6	22	630	8.2		

Standard Materials: Nickel-plated Brass, 303 Stainless Steel and 316 Stainless Steel.

AIR ATOMIZING

CALL 413-772-0846
Call for the name of your nearest BETE representative.