

PULSAFEEDER®

2400T Series Metering Pumps / Grease Trap Dispensers are capable of dispensing low volumes of chemicals, detergents, liquid enzymes, fragrances and bio-chemicals. They are programmable for use in difficult drain/grease cleaning situations.

The 2400T-DC is battery powered for added safety and convenience. The pump is designed for extended battery life and runs on easy-to-install, economical D-size batteries, (Batteries not included), with a visual, low battery indicator built in. 2400T and 2400T Plus gearmotors are also available for 240V 60Hz operation.

The pump case on the 2400T and 2400T Plus is molded of a rugged chemical resistant ABS, while the 2400T-DC is enclosed inside this case. An available option for the 2400T Plus is a lockable latch cover. Mounting pads and a built-in wall mounting bracket allow choice of flat surface or wall mounted installation.

The 2400T features a 24-hour day timer which provides 96 settings in 15 minute increments. The 2400T Plus and 2400T-DC feature a quartz driven time switch with large LCD display showing time, day, switching programs, and program status with a manual override provided. Timer has 8 on/off settings per day, available for daily or weekly programming and can be programmed down to one-minute increments. A lithium battery provides minimum 5-year backup.

Optional tubing materials are available for special chemical applications and higher outputs.

Features

- Engineered to dispense low volumes of chemical.
- Programmable
- Prime push button for quick start-up.
- Clear polycarbonate, acid-resistant head.

Controls



- On/Off Switch
- 2400T- 24 hour mechanical timer
- 2400T PLUS & DC- 7 day, 8 event programmable timer



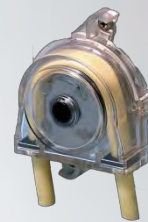
Operating Benefits

- Quick-release twist off head.
- Self-lubricating chemical resistant roller assembly.
- Durable, long-lasting tubing with no tube adjustment.
- Impedance protected gearmotor is safe, quiet and dependable.
- Metal gearing parts are heat treated and output shaft supported by heavy duty bearings.



Aftermarket

- KOPkits
- Gauges
- Dampeners
- Pressure Relief Valves
- Tanks
- Pre-Engineered Systems
- Process Controllers (MicroVision)



Contact factory for applicable agency approvals.

MEC-O-MATIC 2400T Series Peristaltic Metering Pumps

MEC-O-MATIC 2400T Series

Specifications and Model Selection

MODEL		2400T	2400T DC	2400T Plus
Timer		Mechanical	Programmable Microprocessor	Programmable Microprocessor
Nominal Feed Rate	24 hrs.	2.5 gal	NA	2.5 gal
	1 hr.	13.2 oz	NA	13.2 oz
	15 min.	3.3 z	NA	3.3 oz
	1 min.	N/A	3.0 oz	.22 oz
Pressure (max.)	PSIG	25		
	BAR	1.72		
Head	Tubing	.125" I.D. x .38" O.D.	.25" I.D. x .44" O.D.	.125" I.D. x .31" O.D.
Connections	Tubing	.17" I.D. x .25" O.D.		

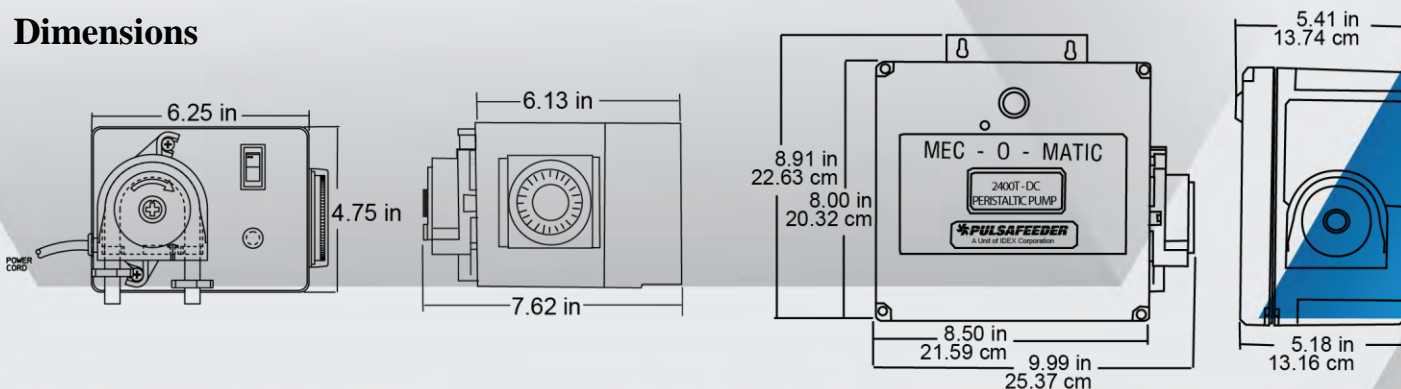
Engineering Data

Pump Head Materials:	Chemical Resistant Resin
Pump Head Tubing: 2400T & 2400T Plus	Viton
	Silicone
2400T-DC	Norprene
Injection Fitting (standard w/check vlv):	PVC
Strainer:	FPP
Tubing:	PE
Pump Housing:	Chemical Resistant Resin
Important: Material Code - PVC=Polyvinyl Chloride, PE=Polyethylene.	
Power Input:	
2400T & 2400T Plus	115 V 60 HZ
2400T-DC	12 V DC
Max Ambient Temperature:	104°F (40°C)
Shipping Weight:	
2400T & 2400T Plus	7 lbs
2400T-DC	7.5 lbs

Typical Installation



Dimensions



27101 Airport Road
Punta Gorda, FL 33982
Phone: ++1(941) 575-3800
Fax: ++1(941) 575-4085

www.pulsatron.com



An ISO 9001 Certified Company

MOM005 G15



PULSAFEEDER®

Chemical solution and slurry metering pumps designed, engineered, and built to last. The pump case is molded of a rugged, chemical resistant ABS. Mounting pads and a built-in wall mounting bracket allow a choice of flat surface or wall mounted installation.

The thermal or impedance protected gear motor is safe, quiet and dependable. All metal gearing parts are heat-treated and the output shaft is supported by heavy-duty bearings.

The feeder head is molded of UV and acid resistant polycarbonate and is designed to snap on and off without tools.

A 10-minute solid-state electric current interrupter is a standard feature, built into every MEC-O-MATIC Dolphin Series pump.

Features

- Feed rates from 13 gpd (2.05 lph) to 97 gpd (15.3 lph) at 25 psi (1.72 bar).
- Pump case is molded chemical resistant ABS.
- Thermal or impedance protected gearmotor is safe, quiet and dependable.
- All metal gearing parts are heat-treated.
- Output shaft is supported by heavy duty bearings.

Controls



- On/Off Switch
- 10 minute solid state electronic current interrupter

Operating Benefits

- Quick-release, twist-off, clear polycarbonate, acid-resistant head.
- Self-lubricating chemical resistant roller assembly.
- Durable, long-lasting tubing with no tube adjustment.
- Heavy duty shaded pole gearmotor with lifetime lubrication.



Aftermarket

- KOPkits
- Gauges
- Dampeners
- Pressure Relief Valves
- Tanks
- Pre-Engineered Systems
- Process Controllers (MicroVision)



Contact factory for applicable agency approvals.

MEC-O-MATIC Dolphin Series Peristaltic Metering Pumps

MEC-O-MATIC Dolphin Series

Specifications and Model Selection

MODEL		UD10	UD50	UD75
Feed Rate (max.)	GPD	13	60	97
	LPH	1.75	8.7	12.4
CC per Minute	60 Hz	34	158	255
	50 Hz	29	145	212
Rev per Minute		10	50	75
Pressure (max.)	PSIG	25		
	BAR	1.72		
Head	Tubing	.25" I.D. x .44" O.D.		
Connection	Tubing	.17" I.D. x .25" O.D.		

Engineering Data

Pump Head Materials: Chemical Resistant Resin

Pump Head Tubing: Synthetic Rubber

**Injection Fitting
(standard w/check vlv):** PVC

Strainer: FPP

Tubing: PE

Pump Housing: Chemical Resistant Resin

Important: Material Code - PVC=Polyvinyl Chloride, PE=Polyethylene.

Power Input: 115 VAC/60 HZ
230 VAC/50-60 HZ

Average Current Draw:

@ 115 VAC; Amps:

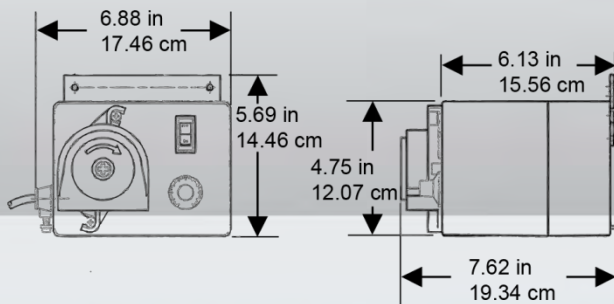
Model UD10 .42 Amps
Model UD50 .62 Amps
Model UD75 .72 Amps

@ 230 VAC; Amps:

Model UD10 .30 Amps @60Hz / .35 Amps @50Hz
Model UD50 .34 Amps @60Hz / .40 Amps @50Hz
Model UD75 .36 Amps @60Hz / .42 Amps @50Hz

Shipping Weight: 7 lbs

Dimensions



Applications

- Cooling Towers
- Swimming Pools
- Boilers
- Agriculture
- Laundries
- Livestock
- Food Processing
- Residential Water Treatment
- Car Washes
- Photo Processors
- Metal Finishing
- Warewashing

Typical Installation



27101 Airport Road
Punta Gorda, FL 33982
Phone: ++1(941) 575-3800
Fax: ++1(941) 575-4085

www.pulsatron.com



An ISO 9001 Certified Company

MOM003 B15



PULSAFEEDER[®]

Pulsafeeder's variable speed peristaltic metering pump the MEC-O-MATIC Series VSP, dispenser head is molded of highly chemical resistant polycarbonate and is designed to snap on and off without tools.

MEC-O-MATIC's self-lubricating roller assembly, included in the head assembly, makes possible long tubing life and the unique quick release, twist off head makes tubing replacement simple and fast.

The dispenser case is molded of a rugged, chemical resistant ABS. Mounting pads and a built-in wall mounting provision allow a choice of flat surface or wall mounted installation.

Continuous duty D.C. motor with electric control allows the VSP internal adjustment knob to decrease or increase the gear motor speed to regulate chemical metering. Gearing is permanently lubricated to reduce pump maintenance.

Features

- Engineered to dispense low volumes of chemical at exacting amounts.
- Pump case is molded chemical resistant ABS.
- Mounting pads and a built in wall mounting provision allow a choice of flat surface or wall mounted installation.

Controls



- On/Off Switch

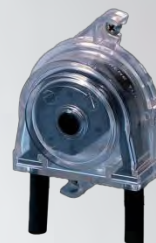
Operating Benefits

- Quick-release, twist-off, clear polycarbonate, acid-resistant head.
- Self-lubricating chemical resistant roller assembly.
- Durable, long-lasting tubing with no tube adjustment.
- Heavy duty shaded pole gearmotor with lifetime lubrication.



Aftermarket

- KOPkits
- Gauges
- Dampeners
- Pressure Relief Valves
- Tanks
- Pre-Engineered Systems
- Process Controllers (MicroVision)



MEC-O-MATIC VSP Series Peristaltic Metering Pumps

MEC-O-MATIC VSP Series

Specifications and Model Selection

MODEL		VSP12	VSP20
Feed Rate	GPD	12	20
	(max.) LPH	1.89	3.15
Pressure	PSIG	25	
	(max.) BAR	1.72	
Head	Tubing	.19" I.D. x .38" O.D.	.25" I.D. x .44" O.D.
Connections	Tubing	.17" I.D. x .25" O.D.	

Engineering Data

Pump Head Materials: Chemical Resistant Resin

Pump Head Tubing: Norprene (standard)
Viton
Silicon

Injection Fitting
(standard w/check vlv): PVC

Strainer: FPP

Tubing: PE

Pump Housing: Chemical Resistant Resin

Important: Material Code - PVC=Polyvinyl Chloride, PE=Polyethylene.

Power Input: 120 V 50-60 HZ
24 VAC

Max Ambient Temperature: 104°F (40°C)

Shipping Weight: 7 lbs

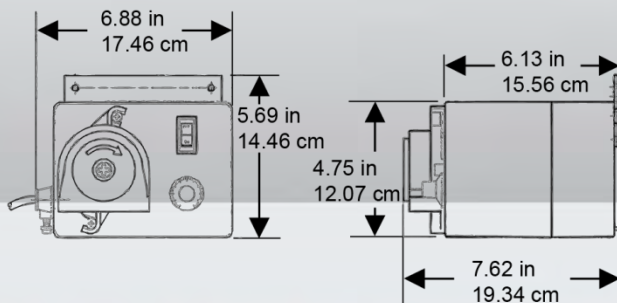
Applications

- Cooling Towers
- Swimming Pools
- Boilers
- Agriculture
- Laundries
- Livestock
- Food Processing
- Residential Water Treatment
- Car Washes
- Photo Processors
- Metal Finishing
- Warewashing

Typical Installation



Dimensions



PULSAFEEDER

27101 Airport Road
Punta Gorda, FL 33982
Phone: ++1(941) 575-3800
Fax: ++1(941) 575-4085

www.pulsatron.com



An ISO 9001 Certified Company

MOM004 B15

IPEX
FLUID & METERING