

Priming Assisted Centrifugal Pump w/Autostart Model VPA4A60C-3CH1 FT4



Size 4" x 4"



| Total Head | | Capacity of Pump in U.S. Gallons per Minute (GPM) at Continuous Performance | | | | |
|---------------------|------|---|------------|------------|------------|-----------|
| P.S.I. | Feet | | | | | |
| 49.0 | 113 | 195 | 195 | 195 | 195 | 195 |
| 43.4 | 100 | 310 | 310 | 310 | 310 | 310 |
| 34.7 | 80 | 341 | 486 | 505 | 505 | 505 |
| 26.0 | 60 | 356 | 515 | 638 | 680 | 680 |
| 17.3 | 40 | 370 | 541 | 655 | 760 | 840 |
| 8.7 | 20 | 380 | 551 | 669 | 773 | 912 |
| Suction Lift | | 25' | 20' | 15' | 10' | 5' |



PUMP SPECIFICATIONS

Size: 4" x 4" (102 mm x 102 mm) Flanged.

Casing: Gray Iron 30.

Maximum Operating Pressure 74 psi (510 kPa).

Maximum Temperature of Liquid Pumped 160°F (71°C).*

Semi-Open Type, Single Vane Impeller: Ductile Iron 65-45-12.

Handles 3" (76,2 mm) Diameter Spherical Solids.

Impeller Shaft: Alloy Steel 4150.

Replaceable Wear Plate: Carbon Steel ASTM A36.

Bearing Housing: Gray Iron 30.

Seal Plate: Gray Iron 30.

Seal: Type 31, Mechanical, Oil-Lubricated. Silicon Carbide Rotating and Stationary Faces. Nitrile Elastomers. Stainless Steel 18-8 Cage and Spring.

Shaft Sleeve: Alloy Steel 4130.

Priming Chamber: Gray Iron 30 Housing w/Stainless Steel Float and Linkage.

Discharge Check Valve: Ductile Iron Housing with Welded Nickel Seat and Buna-N Flapper.

Bearings: Permanently Lubricated Single Row Ball.

Seal Cavity Lubrication: SAE 30 Non-Detergent Oil.

Gaskets: Red Rubber.

O-Rings: Buna-N.

Hardware: Standard Plated Steel.

**Consult Factory for Applications Exceeding Maximum Pressure and/or Temperature Indicated.*

Standard Equipment: Belt-Driven Air Compressor. Hoisting Bail. Combination Skid Base w/Fuel Tank. Strainer. Standard Auto-start Control Panel [Single Ball Type Float Switch](#).**

Optional Equipment: Battery. Skid Drag Base Kit, High Speed (55 MPH/89 KM/H) Single Axle Pneumatic-Tired Wheel Kit w/ DOT-Approved Lights and Electric Brakes.

***50 Ft. (15 m) Standard Length; Dual Switches and Alternate Cable Lengths Available From the Factory.*



ENGINE SPECIFICATIONS

Model: Isuzu 3CH1.

EPA Tier: Final Tier 4.

Type: Three Cylinder, Diesel Engine.

Displacement: 97.6 Cu. In. (1,6 Liters).

Lubrication: Forced Circulation.

Governor: Mechanical.

Air Cleaner: Dry Type.

Fuel Tank: 34 U.S. Gals. (128,7 Liters).

Full Load Operating Time: 21.9 Hrs.

Starter: 12V Electric.

Standard Features: Muffler w/Weather Cap.

DOC Exhaust After-Treatment System.

Optional: Electronic Fuel Level Sensor.

Engine Control Features: Padlockable Box, Tachometer, Coolant Temperature, Oil Pressure, Voltage and Overstart Indicators/Shutdowns. Manual/Stop/Auto Keyswitch. Audible Startup Warning Delay.

ISUZU PUBLISHED PERFORMANCE:

Maximum Gross Continuous BHP

23.9 (17.8 kW) @ 3000 RPM



GORMAN-RUPP PUMPS

www.grpumps.com

Specifications Subject to Change Without Notice

Printed in U.S.A.

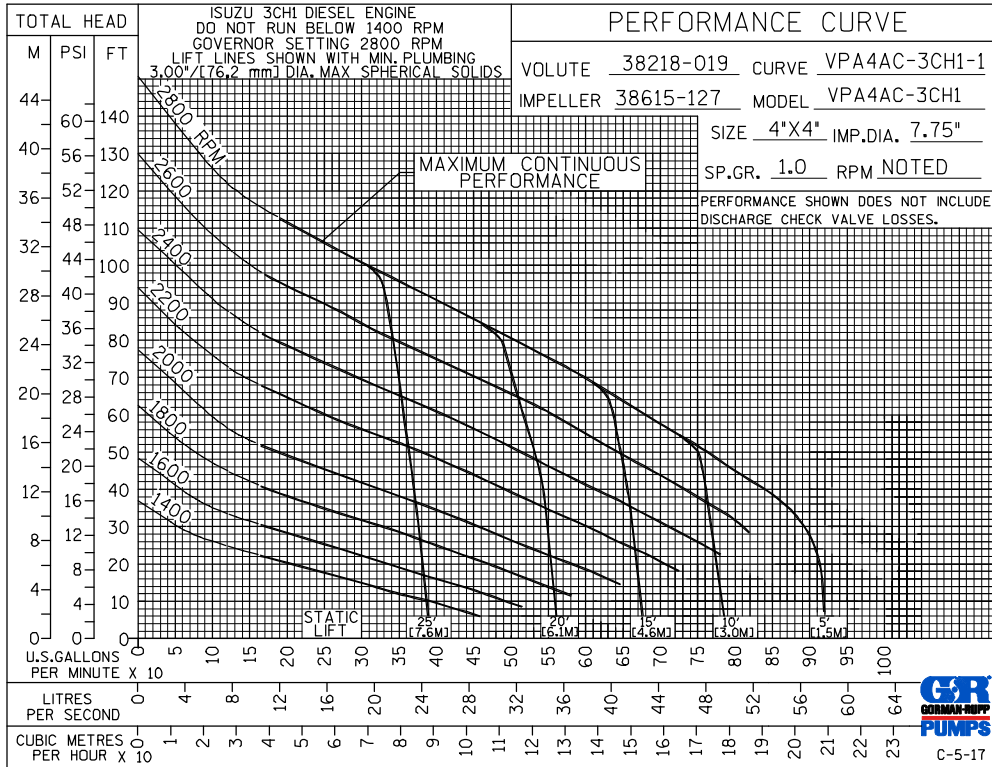
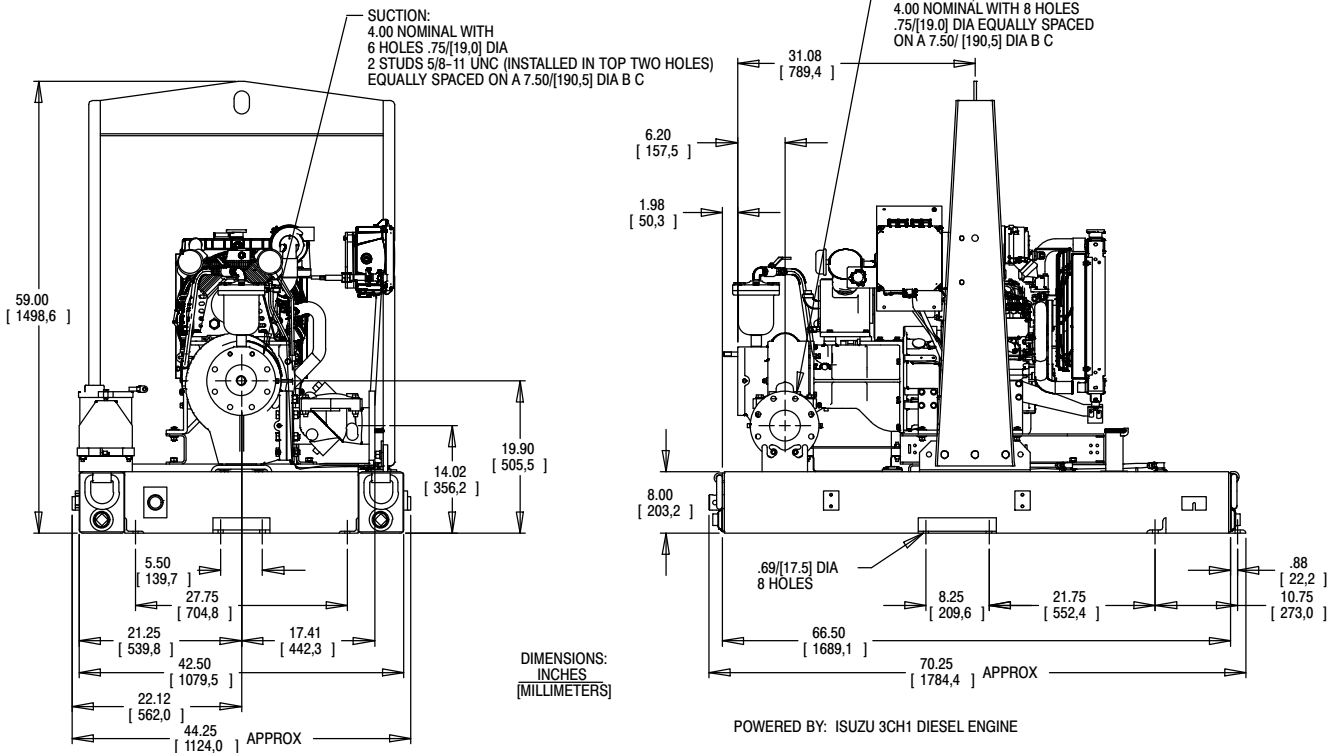
Specification Data

SECTION 41, PAGE 100

APPROXIMATE
DIMENSIONS and WEIGHTS

SKID BASE

NET WEIGHT: 1335 LBS. (605,5 KG.)
SHIPPING WEIGHT: 1335 LBS. (605,5 KG.)
EXPORT CRATE SIZE: 133.6 CU. FT. (3,8 CU. M.)



GORMAN-RUPP PUMPS

www.grpumps.com

Specifications Subject to Change Without Notice

Printed in U.S.A.