

# PUMPS FOR WASTEWATER TREATMENT PLANT APPLICATIONS

*Gorman-Rupp provides wastewater-handling solutions for all your treatment system's pumping needs.*



*The Pump People®*

# PROVIDING QUALITY PUMPING EQUIPMENT FOR 85 YEARS



## A History of Solving Wastewater Challenges

In 1933, Gorman-Rupp developed its first self-priming centrifugal pump to provide our customers with a durable, reliable pump that could perform in a challenging environment. Since then, we've worked closely with our customers around the world to meet their wastewater treatment needs.

With over one million Gorman-Rupp pumps and pump stations installed to date, we have the experience to intimately understand municipal pumping requirements. Our worldwide network of distributors has experienced industry professionals on staff, giving us firsthand knowledge of your most pressing challenges.

We help you solve these challenges and make the most of your limited resources by designing our pumps, and stations, to deliver decades of trouble-free performance. When you choose Gorman-Rupp for your municipal pumping applications, you'll experience some of the lowest lifecycle costs in the industry and benefit from minimal service interruptions. And you'll enjoy one of the highest customer satisfaction ratings in the industry—guaranteed.

## State-of-the-Art Equipment Built in State-of-the-Art Facilities

As the world's leading manufacturer of pumps and pumping systems, Gorman-Rupp offers you access to one of the largest and highest quality lines of industrial pumps available in the market place today.

We maintain nearly one million square feet of the most modern manufacturing, testing and warehousing facilities in the world. Our experienced engineers take advantage of the latest technologies and innovations to custom-design, manufacture and assemble our products.

We perform rigorous testing based on Hydraulic Institute Standards and test to customers' actual operating conditions in our one-of-a-kind testing facility guaranteeing innovative, superior-quality products that are ready to tackle your toughest jobs.

To ensure you get the right equipment for your requirements, Gorman-Rupp partners with a worldwide network of distribution and provides them with the best and most extensive training. Gorman-Rupp distributors will work hand-in-hand with you to recommend, customize and specify equipment. And they are always available should you ever require service assistance.



## APPLICATIONS:

- Influent Equalization Pumps
- Lift Stations
- Grit Pumps
- Primary Sludge Pumps
- RAS Pumps
- Utility Water (Non-Potable) Pumps
- Effluent Pumps
- Scum Pumps
- WAS Pumps
- Supernatant Recirculation Pumps
- Dewatering Feed Pumps
- Sludge Loading Pumps

Super T Series® dewatering feed pumps

# OUR MUNICIPAL LINE OF PRODUCTS INCLUDES:

## Self-Priming Centrifugal Pumps

Gorman-Rupp self-priming centrifugal pumps are easy to install and easy to service. Because they're self-priming, they can be mounted high and dry at floor level, with only the suction line down in the liquid. If service or maintenance is required, it can be completed quickly and easily. There are no long drive shafts to install and align. And, there is never any need for service personnel to enter the sump.

## Standard and Horizontal End Suction Centrifugal Pumps

Gorman-Rupp offers hundreds of models of high volume, high pressure centrifugal pumps. These high efficiency pumps have few moving parts, so maintenance and service are minimal.

## Submersible Pumps

Gorman-Rupp submersible pumps are designed for efficient operation in both dewatering and solids-handling applications, while remaining out-of-sight, beneath the fluid's surface. Available with both electric and hydraulic-driven motors and including versions rated for standard and hazardous locations, there are models available to meet most pumping requirements.

## ReliaSource® Lift Stations

Gorman-Rupp engineers a full line of lift stations, which are 100% Gorman-Rupp custom engineered and manufactured. All Gorman-Rupp pump packages include an extensive selection of pumps, motors, controls, valves and accessories and can be housed in durable fiberglass enclosures. The stations come pretested and ready for immediate hookup to power and piping. And, every ReliaSource® lift station is backed by an industry leading five-year warranty, guaranteed.

For applications dealing with flushable wipes, rags, sludge or any other clog-prone materials, the Eradicator® Solids Management System is available for all sizes of Gorman-Rupp Super T Series® and Ultra V Series® pumps. For the most aggressive applications and more effective solids management, 3", 4" and 6" Super T Series models are available with Eradicator Plus™ technology for cutting and tearing organic solids before they are passed through the pump.





Super T Series® grit pump

# INDUSTRY-LEADING SUPPORT & WARRANTY

## Industry-Leading Warranties

Gorman-Rupp has you covered with the following warranties:



When paired with self-priming and horizontal end suction pumps or ReliaSource® pump packages, Gorman-Rupp's EchoStorm™ venturi aeration system adds dissolved oxygen into a variety of Municipal and wastewater treatment liquids.



Gorman-Rupp stands behind the quality of our wastewater pumps and pump systems to ensure they meet your requirements for the long haul. Every pump and pump station is factory-tested for long lasting, trouble-free use. We maintain client satisfaction well beyond product installation and offer a variety of services to meet your needs, including:

### Training

We provide in-depth training seminars for service personnel in our one-of-a-kind training facility. You'll learn about our products, technologies and how to service your equipment.

### Service

Because our equipment is designed for minimum maintenance and ease of service, it's simple and cost-effective for your wastewater treatment plant to perform their own service, and only minimal resources are required to keep our pumps and pump packages operating at peak performance.

Our worldwide distribution network is available for service questions and support as well as warranty work. Should you wish to outsource service, our distribution network can provide ongoing service for your pump and/or pump package.

### Fast Parts Service

When you need a replacement part for any of our products, you'll have it fast. With the largest parts and pump inventory in the industry at our disposal, we fill and ship most parts orders within 24 hours.

### Industry-Leading Warranty

The warranties on Gorman-Rupp products are some of the best in the industry. Because of our quality manufacturing processes and our rigorous product testing, we have confidence in the quality of our products. Thanks to our warranties, you can too. Gorman-Rupp has you covered with warranties up to five years. Visit [www.GRpumps.com/warranty](http://www.GRpumps.com/warranty) for specific warranty information.



# THE LONGEST LASTING PUMPS IN THE BUSINESS

## Self-Priming Centrifugal Pumps



### Ultra V Series® Heavy-Duty Solids-Handling Pumps

Size: 3" (75 mm) to 6" (150 mm)  
Max Capacity: 1900 GPM (119.9 lps)  
Max Head: 168' (51.2 m)  
Max Solids: 3" (76.2 mm)



### Ultra V Series® w/UltraMate® Heavy-Duty Solids-Handling Pumps

Size: 3" (75 mm) to 6" (150 mm)  
Max Capacity: 1900 GPM (119.9 lps)  
Max Head: 325' (99.1 m)  
Max Solids: 3" (76.2 mm)



### Super T Series® Heavy-Duty Solids-Handling Pumps

Size: 2" (50 mm) to 10" (250 mm)  
Max Capacity: 3400 GPM (214.5 lps)  
Max Head: 130' (39.6 m)  
Max Solids: 3" (76.2 mm)



### 10 Series® Heavy-Duty Solids-Handling Pumps

Size: 1.5" (38 mm) to 12" (300 mm)  
Max Capacity: 6700 GPM (422.7 lps)  
Max Head: 130' (39.6 m)  
Max Solids: 3" (76.2 mm)



### 80 Series® Heavy-Duty Solids-Handling Pumps

Size: 1.25" (32 mm) to 6" (150 mm)  
Max Capacity: 1860 GPM (117.3 lps)  
Max Head: 205' (62.5 m)  
Max Solids: 1.9" (49.3 mm)



### Super U Series® Limited Solids-Handling Pumps

Sizes: 3" (75 mm) to 6" (150 mm)  
Max Capacity: 1500 GPM (94.6 lps)  
Max Head: 207' (63.1 m)  
Max Solids: 1.25" (31.8 mm)

This ReliaSource® Above-Ground Submersible Valve Package (ASVP) utilizing SF Series® solids-handling submersible pumps transfers sludge at a wastewater treatment plant.

## Standard Centrifugal Pumps



### VG Series & VGH Series High Efficiency Pumps

Size: 1.25" (30 mm) to 8" (200 mm)  
Max Capacity: 4900 GPM (309.1 lps)  
Max Head: 500' (152.4 m)  
Max Solids: 1.38" (35.1 mm)

## Standard Horizontal End Suction Centrifugal Pumps



### 6500 Series® Solids- & Clean Liquids-Handling Pumps

Size: 3" (75 mm) to 16" (400 mm)  
Max Capacity: 15000 GPM (946.4 lps)  
Max Head: 530' (161.5 m)  
Max Solids: 4" (101.6 mm)

## Submersible Centrifugal Pumps



### SF Series® Solids-Handling Pumps

Sizes: 3" (75 mm) to 8" (200 mm)  
Max Capacity: 3400 GPM (214.5 lps)  
Max Head: 170' (51.8 m)  
Max Solids: 3" (76.2 mm)  
Horsepower: 3 HP to 75 HP

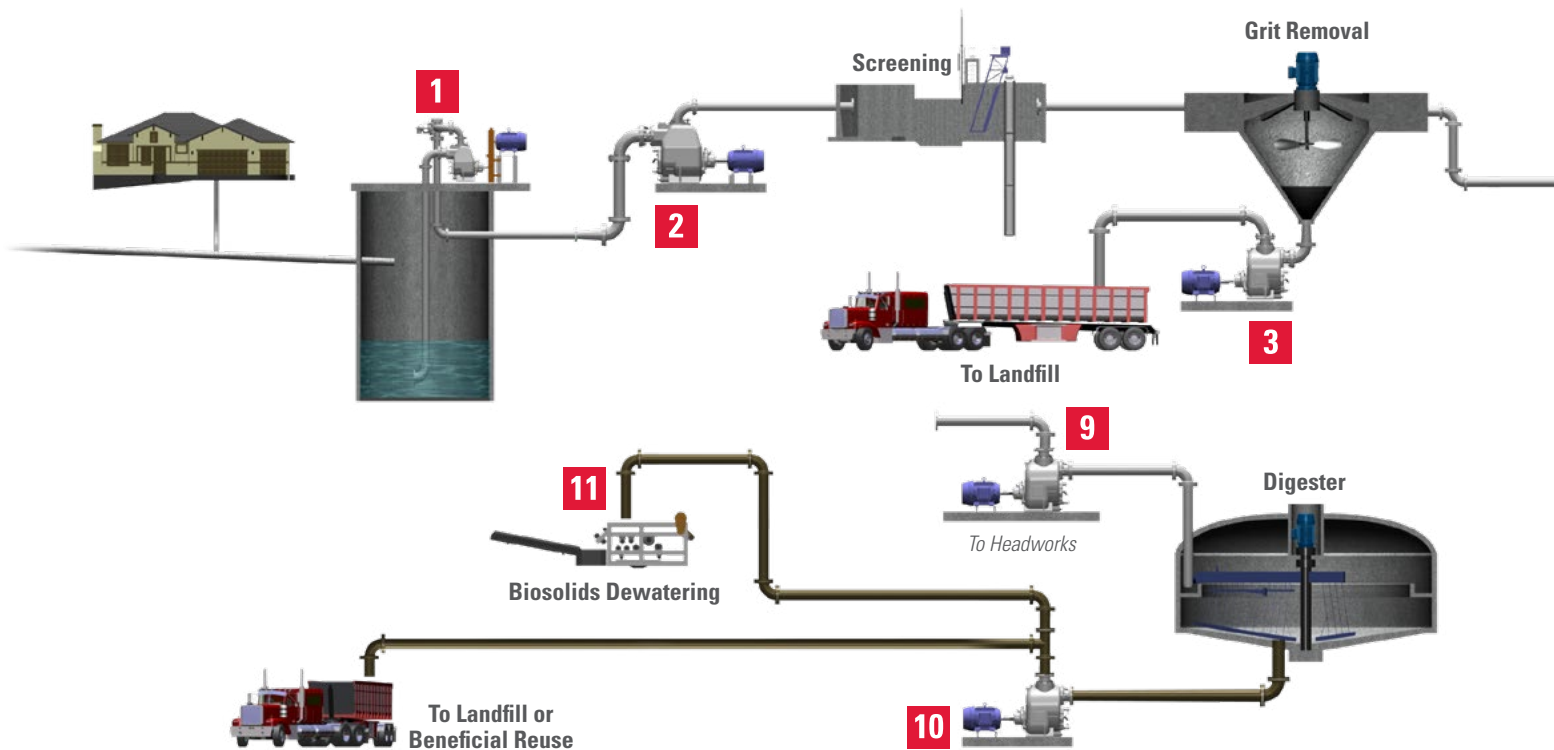
## Self-Priming Positive Displacement Pump



### SludgeKat® Hydraulic Driven Pump

Size: 4" (100 mm)  
Max Capacity: 226 GPM (14.3 lps)  
Max Head: 390' (119.0 m)  
Max Solids: 2.4" (61.0 mm)

# MUNICIPAL WASTEWATER TREATMENT PLANT



## 01 | Influent Pump Station

### • ReliaSource® Modular Above-Ground

Pump Size: 2" (50 mm) to 12" (300 mm)  
 Max Capacity: 5200 GPM (328.1 lps)  
 Max Head: 320' (97.5 m)  
 Max Solids: 3" (76.2 mm)

### • ReliaSource® 8x9 Above-Ground

Pump Size: 2" (50 mm) to 8" (200 mm)  
 Max Capacity: 2600 GPM (164.0 lps)  
 Max Head: 160' (48.8 m)  
 Max Solids: 3" (76.2 mm)

### • ReliaSource® 8x12 Above-Ground

Pump Size: 2" (50 mm) to 8" (200 mm)  
 Max Capacity: 2600 GPM (164.0 lps)  
 Max Head: 320' (97.5 m)  
 Max Solids: 3" (76.2 mm)

### • ReliaSource® 6x6 Above-Ground

Pump Size: 2" (50 mm) to 6" (150 mm)  
 Max Capacity: 1300 GPM (82.0 lps)  
 Max Head: 150' (45.7 m)  
 Max Solids: 3" (76.2 mm)

### • ReliaSource® 6X6T Above-Ground

Pump Size: 2" (50 mm) to 6" (150 mm)  
 Max Capacity: 1475 GPM (93.1 lps)  
 Max Head: 160' (48.8 m)  
 Max Solids: 3" (76.2 mm)

### • ReliaSource® 7x10 Above-Ground

Pump Size: 2" (50 mm) to 8" (200 mm)  
 Max Capacity: 2500 GPM (157.7 lps)  
 Max Head: 160' (48.8 m)  
 Max Solids: 3" (76.2 mm)

### • ReliaSource® Below-Ground

Pump Size: 2" (50 mm) to 10" (250 mm)  
 Max Capacity: 3300 GPM (208.2 lps)  
 Max Head: 155' (47.2 m)  
 Max Solids: 3" (76.2 mm)  
 Station Sizes: 7'6" (2.3 m) and 10' (3.1 m)

### • ReliaSource® Above-Ground Submersible Valve Package (ASVP)

Pump Size: 2" (50 mm) to 6" (150 mm)  
 Max Capacity: 1600 GPM (100.9 lps)  
 Max Head: 128' (47.2 m)  
 Max Solids: 3" (76.2 mm)  
 Horsepower: 3 HP to 50 HP

### • ReliaSource® Auto-Start

Pump Size: 2" (50 mm) to 10" (250 mm)  
 Max Capacity: 3400 GPM (214.5 lps)  
 Max Head: 320' (97.5 m)  
 Max Solids: 3" (76.2 mm)

### • ReliaSource® Base-Mounted

Pump Size: 2" (50 mm) to 10" (250 mm)  
 Max Capacity: 3400 GPM (214.5 lps)  
 Max Head: 320' (97.5 m)  
 Max Solids: 3" (76.2 mm)

## 02 | Influent Equalization Pump

- Ultra V Series® Self-Priming Pumps
- Super T Series® Self-Priming Pumps
- 10 Series® Self-Priming Pumps
- 6500 Series® Horizontal End Suction Pumps
- SF Series® Submersible Pumps

## 03 | Grit Pump

- Ultra V Series® Self-Priming Pumps
- Super T Series® Self-Priming Pumps
- 10 Series® Self-Priming Pumps
- SF Series® Submersible Pumps

## 04 | Primary Sludge Pump

- Ultra V Series® Self-Priming Pumps
- Super T Series® Self-Priming Pumps
- 10 Series® Self-Priming Pumps
- 6500 Series® Horizontal End Suction Pumps
- SF Series® Submersible Pumps

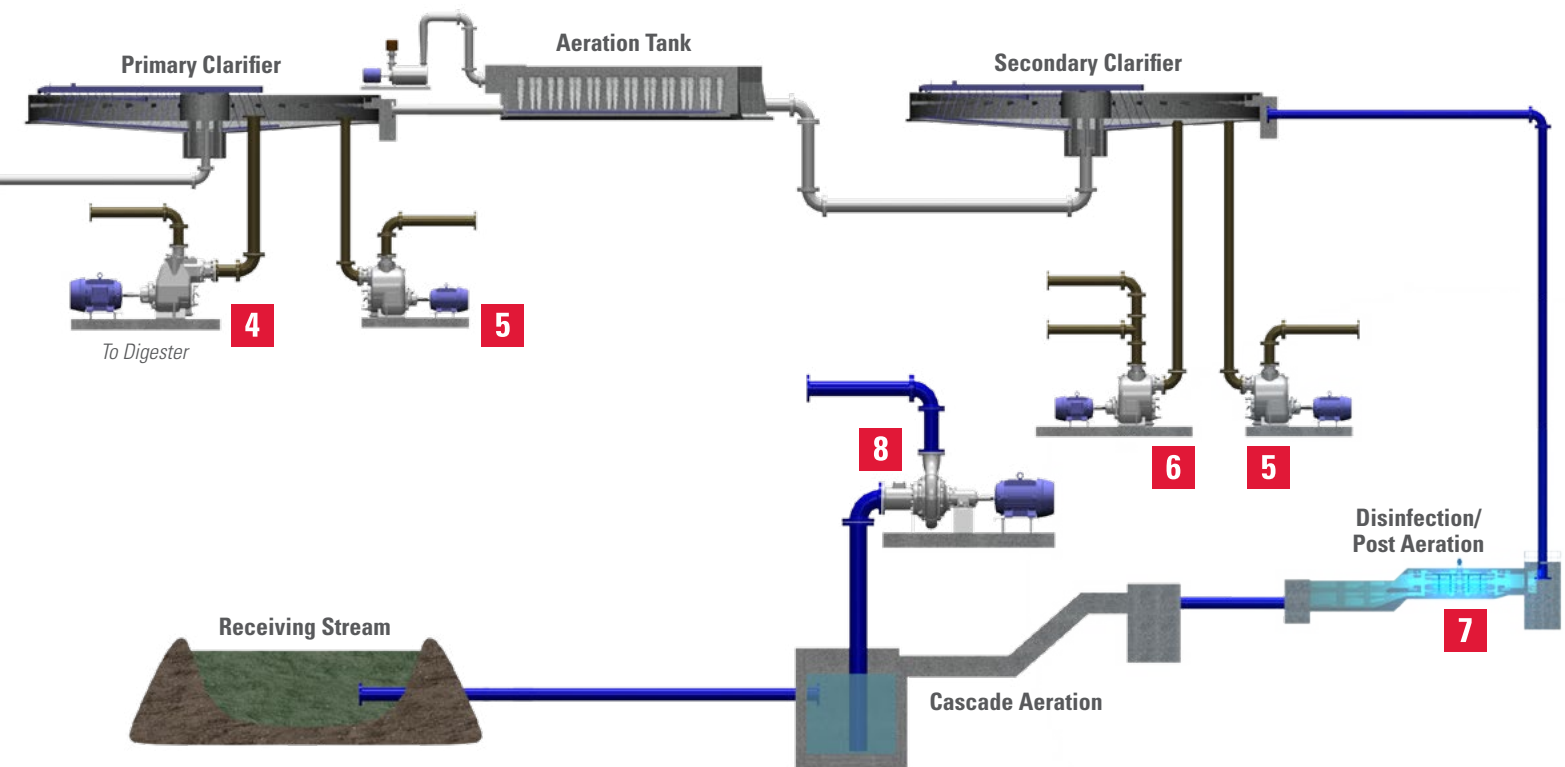
## 05 | Scum Pump

- Ultra V Series® Self-Priming Pumps
- Super T Series® Self-Priming Pumps
- 6500 Series® Horizontal End Suction Pumps
- SF Series® Submersible Pumps

## 06 | RAS & WAS Pumps

- Ultra V Series® Self-Priming Pumps
- Super T Series® Self-Priming Pumps
- 10 Series® Self-Priming Pumps
- 6500 Series® Horizontal End Suction Pumps
- SF Series® Submersible Pumps

# PUMPING APPLICATIONS



## 07 | Effluent Pump

- Ultra V Series® Self-Priming Pumps
- Super T Series® Self-Priming Pumps
- 10 Series® Self-Priming Pumps
- Super U Series® Self-Priming Pumps
- 6500 Series® Horizontal End Suction Pumps
- SF Series® Submersible Pumps

## 08 | Utility Water (Non-Potable) Pumps

- Ultra V Series® Self-Priming Pumps
- Super T Series® Self-Priming Pumps
- 80 Series® Self-Priming Pumps
- Super U Series® Self-Priming Pumps
- VG Series & VGH Series Standard Centrifugal Pumps
- 6500 Series® Horizontal End Suction Pumps

## 09 | Supernatant Recirculation Pump

- Ultra V Series® Self-Priming Pumps
- Super T Series® Self-Priming Pumps
- 6500 Series® Horizontal End Suction Pumps

## 10 | Dewatering Feed Pump

- Ultra V Series® Self-Priming Pumps
- Super T Series® Self-Priming Pumps
- 6500 Series® Horizontal End Suction Pumps

## 11 | Sludge Loading/Transfer Pump

- Ultra V Series® Self-Priming Pumps
- Super T Series® Self-Priming Pumps
- 6500 Series® Horizontal End Suction Pumps
- SludgeKat® Self-Priming Positive Displacement Pump

*NOTE: Gorman-Rupp recognizes that the above treatment plant diagram will not apply for all municipalities and is meant for illustrative purposes only.*



80 Series® utility water pumps

# WASTEWATER TREATMENT SOLUTIONS DESIGNED WITH YOUR NEEDS IN MIND



★ **Manufacturing Facilities**  
● **Distribution Center**

**Gorman-Rupp USA**  
Mansfield, Ohio, USA

**Gorman-Rupp Canada**  
St. Thomas, Ontario, Canada

**Gorman-Rupp Europe**  
Waardenburg, Netherlands  
Namur, Belgium

**Gorman-Rupp Africa**  
Cape Town, South Africa  
Durban, South Africa  
Johannesburg, South Africa (Headquarters)

**Distribution Center**  
Grand Prairie, Texas, USA

Gorman-Rupp offers the expertise, the facilities, the proven equipment and the industry-leading product support to meet all your municipal pumping needs. For wastewater-handling systems that deliver maximum value and require minimal service, contact the experts at Gorman-Rupp today.



**GORMAN-RUPP PUMPS**  
P.O. BOX 1217  
MANSFIELD, OHIO 44901-1217 | USA  
TEL: 419.755.1011 | FAX: 419.755.1251

**GRPUMPS.COM**



*The Pump People®*