

*Super*  
**T SERIES**  
VARIOUS PATENTS APPLY

Equipped With  
**ERADICATOR<sup>PLUS</sup>**  
**Self Priming Centrifugal Pump**  
**Model T6F71SC-B**  
**Size 6" x 6"**

**PUMP SPECIFICATIONS**

**Size:** 6" x 6" (152 mm x 152 mm) NPT - Female.

**Casing:** Gray Iron 30.

Maximum Operating Pressure 78 psi (538 kPa).\*

**Semi-Open Type, Continuous Vane Impeller:** G-R Hard Iron.

Handles 2.25" (57,1 mm) Diameter Spherical Solids.

**Impeller Shaft:** Stainless Steel 17-4 PH.

**Replaceable Self-Cleaning Wear Plate:** Hardened Alloy Steel.

**Adjustable Back Cover Plate:** Gray Iron 30.

**Removable Inspection Cover Plate:** Gray Iron 30; 20 lbs. (9,1 kg.).

**Flap Valve:** Neoprene <sup>w</sup>/Nylon and Steel Reinforcing.

**Seal Plate:** G-R Hard Iron.

**Bearing Housing:** Gray Iron 30.

**Radial Bearing:** Open Single Row Ball.

**Thrust Bearing:** Open Double Row Ball.

**Bearing and Seal Cavity Lubrication:** SAE 30 Non-Detergent Oil.

**Flanges:** Gray Iron 30.

**Gaskets:** Buna-N, Compressed Synthetic Fibers, Vegetable Fiber, PTFE, Cork, and Rubber.

**O-Rings:** Buna-N, Fluorocarbon (DuPont Viton<sup>®</sup> or Equivalent).

**Hardware:** Standard Plated Steel.

**Brass Pressure Relief Valve.**

**Bearing and Seal Cavity Oil Level Sight Gauges.**

**Optional Equipment:** Tungsten Titanium Carbide Seal. Metal Bellows

Seal. Automatic Air Release Valve. 120V/240V Casing Heater. High

Pump Temperature Shutdown Kit. G-R Hard Iron Casing.

Gray Iron 30 Suction and Discharge Spool Flanges:

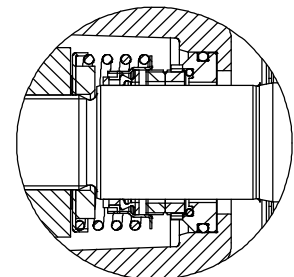
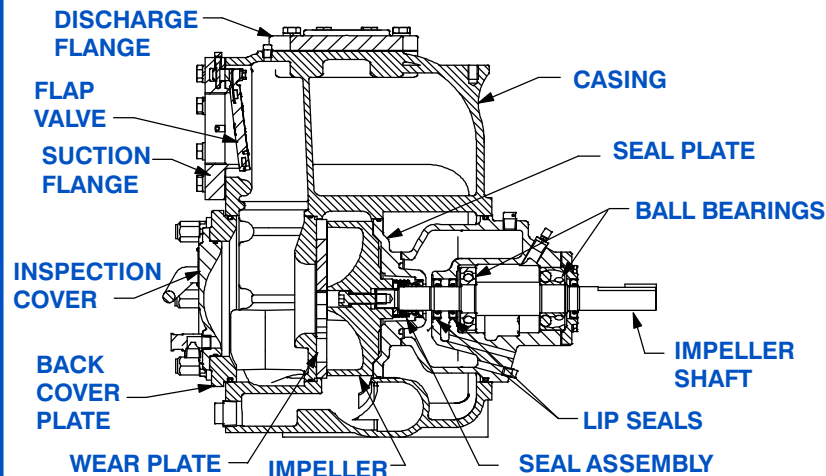
6" ASA (**Specify Model T6F71SC-B /F**).

150 mm DIN 2527 (PN 16) (**Specify Model T6F71SC-B /FM**).

*\*Consult Factory for Applications Exceeding Maximum Pressure and/or Temperature Indicated.*



Shown with Optional Suction and Discharge Spool Flanges (Available in ASA or DIN Standard Sizes).

**SEAL DETAIL**

Mechanical, Oil-Lubricated, Double Floating, Self-Aligning. Silicon Carbide Rotating and Stationary Faces. Stainless Steel 316 Stationary Seat. Fluorocarbon Elastomers (DuPont Viton<sup>®</sup> or Equivalent). Stainless Steel 18-8 Cage and Spring. Maximum Temperature of Liquid Pumped, 160°F (71°C).\*

**GR**  
GORMAN-RUPP  
PUMPS

**GORMAN-RUPP PUMPS**

www.grpumps.com

Specifications Subject to Change Without Notice

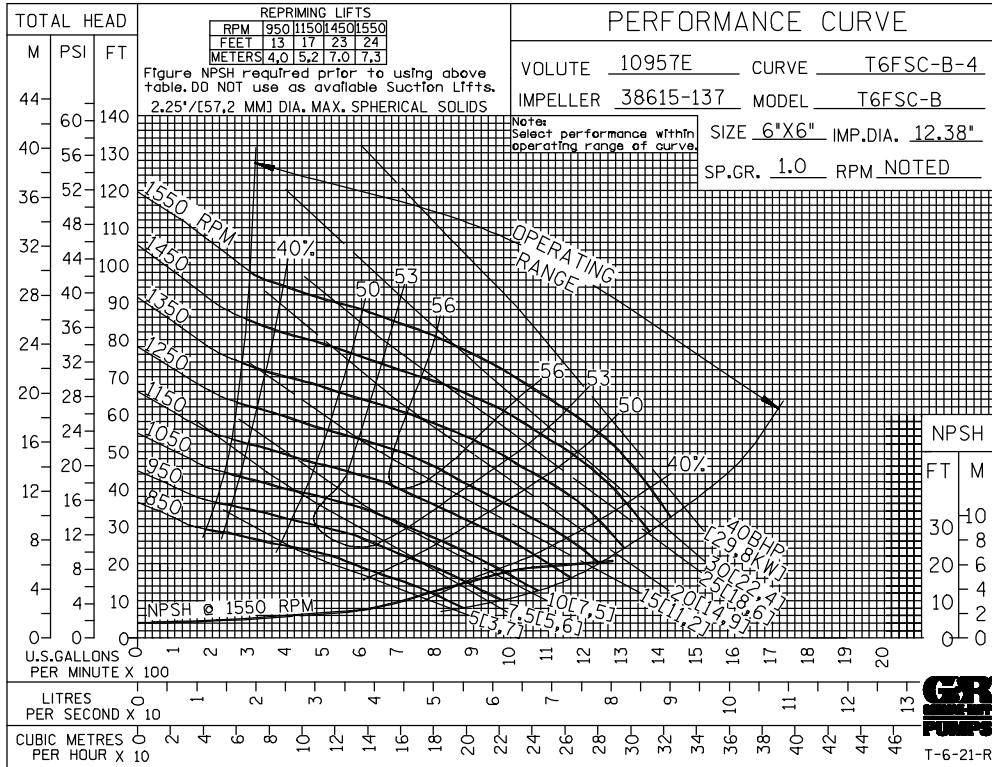
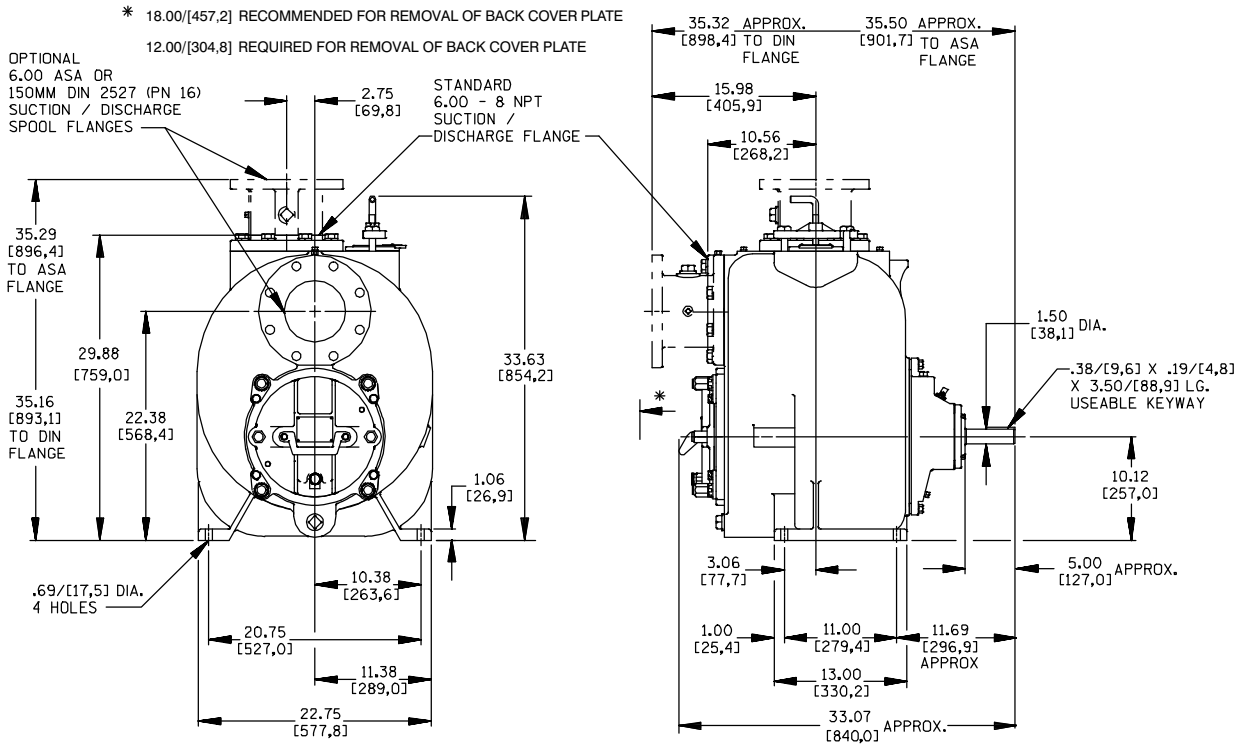
Printed in U.S.A.

**Specification Data**

**SECTION 55, PAGE 2277**

**APPROXIMATE DIMENSIONS and WEIGHTS**

**NET WEIGHT: 905 LBS. (411 KG.)\***  
**SHIPPING WEIGHT: 990 LBS. (449 KG.)\***  
**EXPORT CRATE: 32.5 CU. FT. (0,92 CU. M.)**  
**\*ADD 25 LBS. (11,3 KG.) W/EACH SPOOL FLANGE**



**GORMAN-RUPP PUMPS**

www.grpumps.com

Specifications Subject to Change Without Notice

Printed in U.S.A.