

*Super*  
**TSERIES**

VARIOUS PATENTS APPLY

Equipped With  
**ERADICATOR<sup>®</sup>**  
**PLUS**

# Self Priming Centrifugal Pump

## Model T3F71SC-B

### Size 3" x 3"



#### PUMP SPECIFICATIONS

**Size:** 3" x 3" (76 mm x 76 mm) NPT - Female.

**Casing:** Gray Iron 30.

Maximum Operating Pressure 79 psi (545 kPa).\*

**Semi-Open Type, Continuous Vane Impeller:** G-R Hard Iron.

Handles 1 3/4" (44,5 mm) Diameter Spherical Solids.

**Impeller Shaft:** Stainless Steel 17-4 PH.

**Replaceable Self Cleaning Wear Plate:** Hardened Alloy Steel.

**Adjustable Back Cover Plate:** Gray Iron 30.

**Removable Inspection Cover Plate:** Gray Iron 30; 12 lbs. (5,4 kg.).

**Flap Valve:** Neoprene w/Nylon and Steel Reinforcing.

**Seal Plate:** G-R Hard Iron.

**Bearing Housing:** Gray Iron 30.

**Radial Bearings:** Open Single Row Ball.

**Thrust Bearings:** Open Double Row Ball.

**Bearing and Seal Cavity Lubrication:** SAE 30 Non-Detergent Oil.

**Flanges:** Gray Iron 30.

**Gaskets:** Buna-N, Compressed Synthetic Fibers, Vegetable Fiber, PTFE, Cork, and Rubber.

**O-Rings:** Buna-N, Fluorocarbon (DuPont Viton<sup>®</sup> or Equivalent).

**Hardware:** Standard Plated Steel.

**Brass Pressure Relief Valve.**

**Bearing and Seal Cavity Oil Level Sight Gauges.**

**Optional Equipment:** Automatic Air Release Valve. 120V/240V Casing Heater. High Pump Temperature Shutdown Kit. G-R Hard Iron Casing. Gray Iron 30 Suction and Discharge Spool Flanges: Tungsten Titanium Carbide Seal. Metal Bellows Seal.

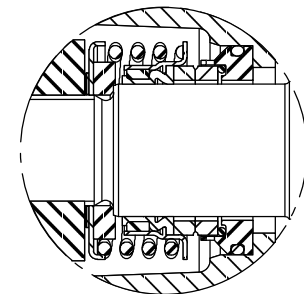
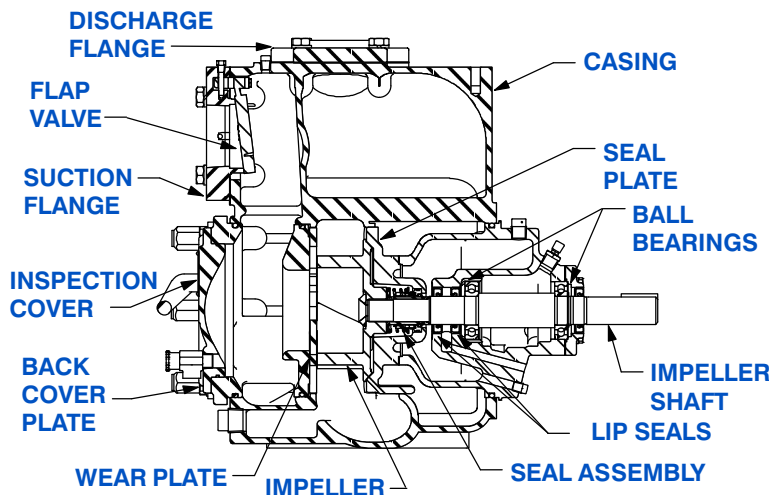
3" ASA (Specify Model T3F71S-B /F).

80 mm DIN 2527 (PN 16) (Specify Model T3F71S-B /FM).

\*Consult Factory for Applications Exceeding Maximum Pressure and/or Temperature Indicated.



Also Available with ASA or DIN Standard Size Suction & Discharge Spool Flanges.



#### SEAL DETAIL

Mechanical, Oil-Lubricated, Double Floating, Self-Aligning. Silicon Carbide Rotating and Stationary Faces. Stainless Steel 316 Stationary Seat. Fluorocarbon Elastomers (DuPont Viton<sup>®</sup> or Equivalent). Stainless Steel 18-8 Cage and Spring. Maximum Temperature of Liquid Pumped, 160°F (71°C).\*

**GR**  
GORMAN-RUPP  
PUMPS

### GORMAN-RUPP PUMPS

www.grpumps.com

Specifications Subject to Change Without Notice

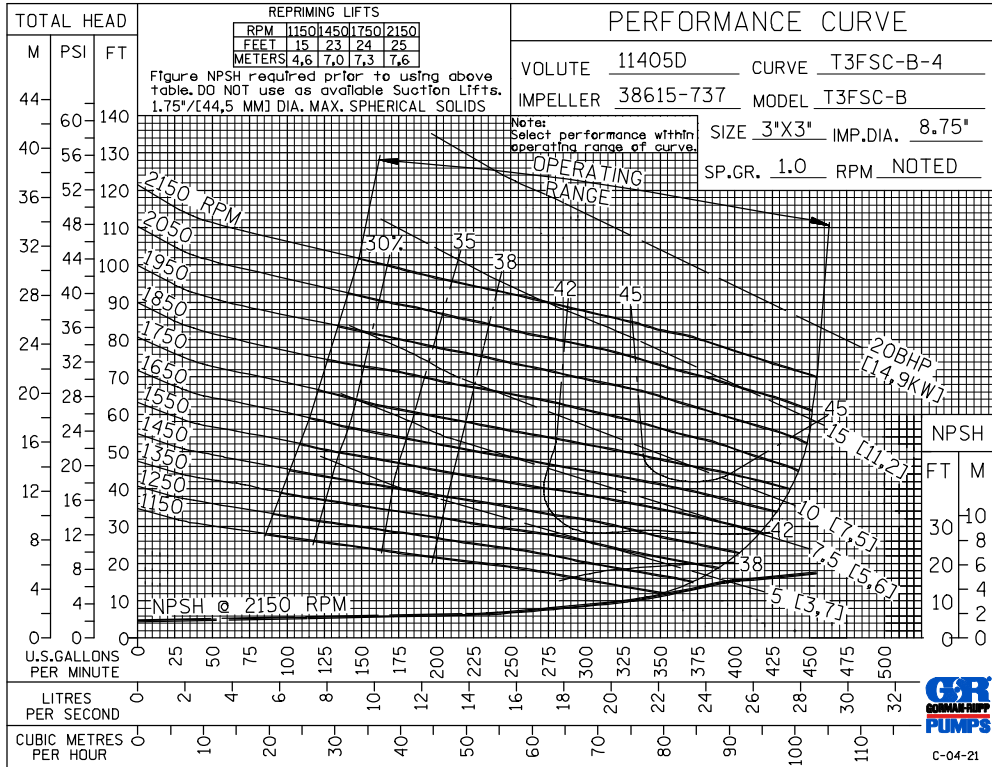
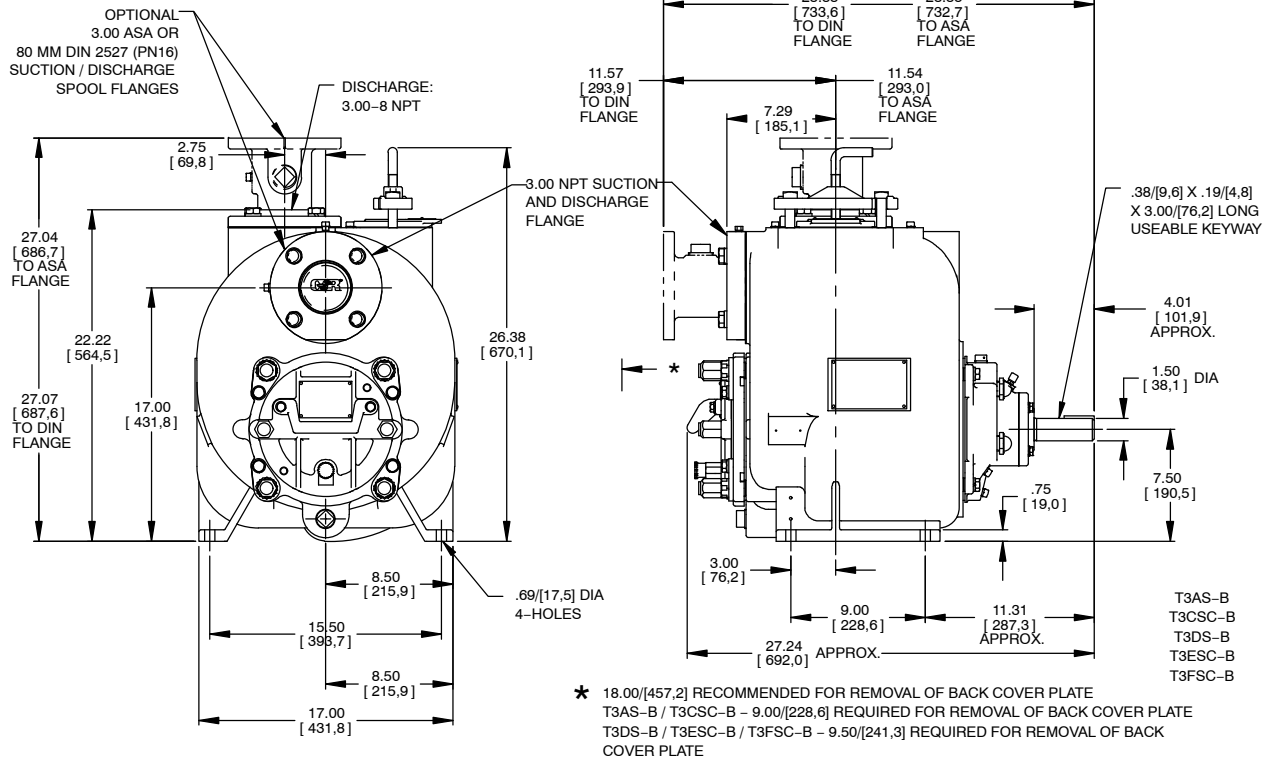
Printed in U.S.A.

**Specification Data**

**SECTION 55, PAGE 2087**

**APPROXIMATE DIMENSIONS and WEIGHTS**

**NET WEIGHT: 436 LBS. (198 KG.)\***  
**SHIPPING WEIGHT: 457 LBS. (207 KG.)\***  
**EXPORT CRATE: 9.9 CU. FT. (0,28 CU. M.)**  
**\*ADD 10 LBS. (4,5 KG.) W/EACH SPOOL FLANGE**



**GORMAN-RUPP PUMPS**

www.grpumps.com

Specifications Subject to Change Without Notice

Printed in U.S.A.