

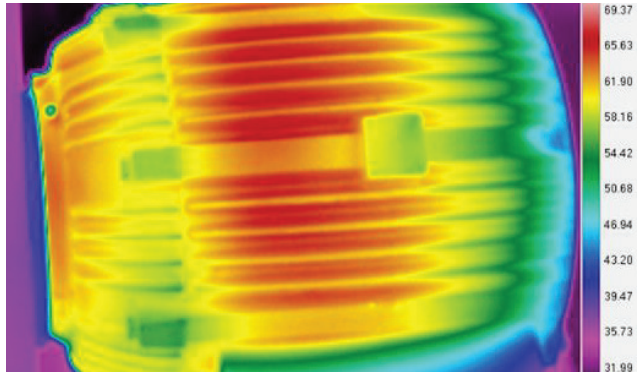
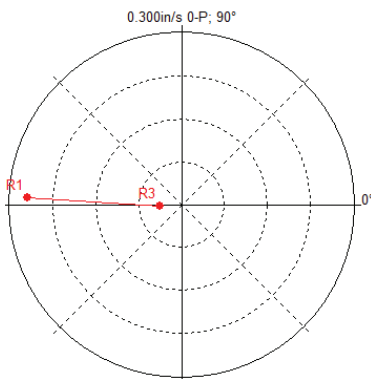
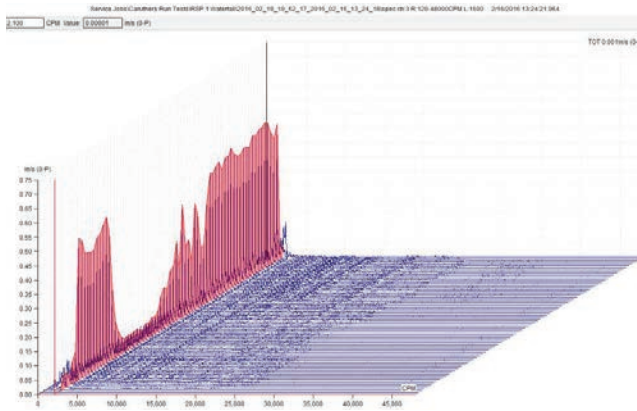
Field Services & Installations

The ASL Roteq Service Team does it all including Emergency Service; installation and start-up; remove, refurbish, reinstall and commission your pump, mixer, motor or gear reducer. Our Predictive Maintenance Program provides more than just vibration analysis - we record bearing temperatures, look for seal leaks, check where the pump is operating on its curve and use Infrared technology to analyse the electrical system.



Services Include

- Vibration Analysis
- Vibration | PdM Programs
- Training & Certification
- Advanced Diagnostics
- Laser Alignment
- Infrared Thermography
- Field Balancing
- Hydraulic Analysis
- VTP De-tuning Plates



Remote Analysis Services (RAS)

How RAS Works

1. Purchase, Lease or Rent a Data Collector
2. Send us a list of Machines to be monitored
3. We create the database and send the route files back for transfer to the data collector
4. Collect the readings on your machines
5. Transmit the data back to us for analysis (Email | Dropbox)
6. We analyse the data and generate a deficiency report
7. Repeat Monthly or Quarterly



Benefits of RAS and Continuous Monitoring

- Analysis performed by Level 3 Certified Analysts
- Optimizes the cost structure of your program
- Maintain program ownership
- Flexible Implementation
- 24/7 Continuous Monitoring
- Alarm Messaging
- Remote Reporting of Customer Data