

**BROOKS  
BROOKS**  
SPRAYING  
PUMPING  
FILTERING  
AND VALVES

A DIVISION OF JOHN BROOKS COMPANY LIMITED  
**ASL  
Roteq**

**PUMP REPAIR  
FIELD SERVICES  
TURNKEY SOLUTIONS  
TRAINING**



**GR**  
GORMAN-RUPP  
PUMPS | CANADA

**GRUNDFOS**

**wilo**

**RUHRPUMPEN**

Unmatched Reliability  
**Vaughan**

**e one**  
SEWER SYSTEMS

**SEEPEX.**  
ALL THINGS FLOW

**Johnson**

**WILDEN**

**Hydra-Cell**  
Seal-less Pumps

**TUTHILL**  
Pump Group

**SUMMIT**  
PUMP

**GOULDS**  
WATER TECHNOLOGY  
a xylem brand

**PULSAFEEDER**  
ENGINEERED PRODUCTS

**fti**  
FINISH THOMPSON INC.

**Blackmer**

**EnviroGear**  
INTERNAL GEAR PUMPS

**DDP**  
DISC FLO  
DISC PUMPS

**JOHN BROOKS COMPANY LIMITED**  
PROUDLY SERVING CANADIAN INDUSTRY FOR OVER 80 YEARS  
EST. 1938

## PUMP REPAIR & UPGRADE

With our fully-equipped service centre and experienced technicians, we provide complete engineered and reversed engineered solutions. From the simple repair to the complex overhaul, we approach each repair with an engineered solution. Our engineering department reviews each repair before we provide our recommendation. Our PC Pump rotor refurbishment program provides longer rotor life than your OEM rotor at about half the cost. Refurbished rotors also save thousands of pounds of scrap metal in landfills.

### PUMPS & PARTS

- API PUMPS
- BLOWERS
- BOILER FEED PUMPS
- CLARIFIER | THICKENER DRIVES
- CONDENSATE PUMPS
- DIGESTER MIXERS
- END SUCTION PUMPS - ANSI & API
- FIRE PUMPS
- GEAR REDUCERS
- GRINDER PUMPS
- HORIZONTAL SPLITCASE
- IMPELLERS
- MIXED FLOW VERTICAL PUMPS
- MECHANICAL SEAL REPAIRS
- MIXERS
- PISTON SLUDGE PUMPS
- SUBMERSIBLE PUMPS
- SUMP PUMPS
- VERTICAL TURBINE PUMPS
- WELL PUMPS

### REPAIRS

- ABS • ARO • Allis Chalmers • Armstrong • Barns • Byron Jackson • Cornell • Durco • Flowserve
- Flygt • Goulds • Gusher • Hayward Gordon • KSB • Moyno • Netzsch • Peerless • SandPiper • Sulzer
- Sunflo • Toyo • Versamatic • Viking • Volgelsang • Wemco • Worthington ...and more!!



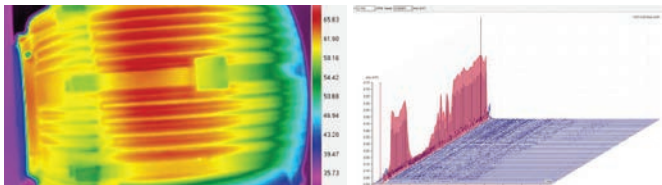
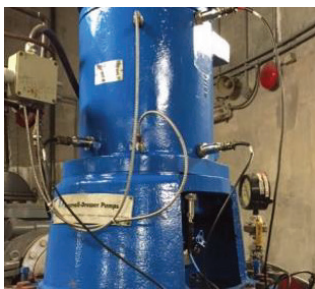
## FIELD SERVICES & SOLUTIONS

The ASL Roteq Service Team does it all including Emergency Service; installation and start-up; remove, refurbish, reinstall and commission your pump, mixer, motor or gear reducer. Our Predictive Maintenance Program provides more than just vibration analysis - we record bearing temperatures, look for seal leaks, check where the pump is operating on its curve and use Infrared technology to analyse the electrical system.



### PREDICTIVE & PREVENTATIVE SERVICES

- Vibration Analysis
- Vibration | PdM Programs
- Training & Certification
- Advanced Diagnostics
- Laser Alignment
- Infrared Thermography
- Field Balancing
- Hydraulic Analysis
- VTP De-tuning Plates



### REMOTE ANALYSIS SERVICES (RAS)

#### How RAS Works

- Purchase, Lease or Rent a Data Collector
- Send us a list of Machines to be monitored
- We create the database and send the route files back for transfer to the data collector
- Collect the readings on your machines
- Transmit the data back to us for analysis (Email | Dropbox)
- We analyse the data and generate a deficiency report
- Repeat Monthly or Quarterly

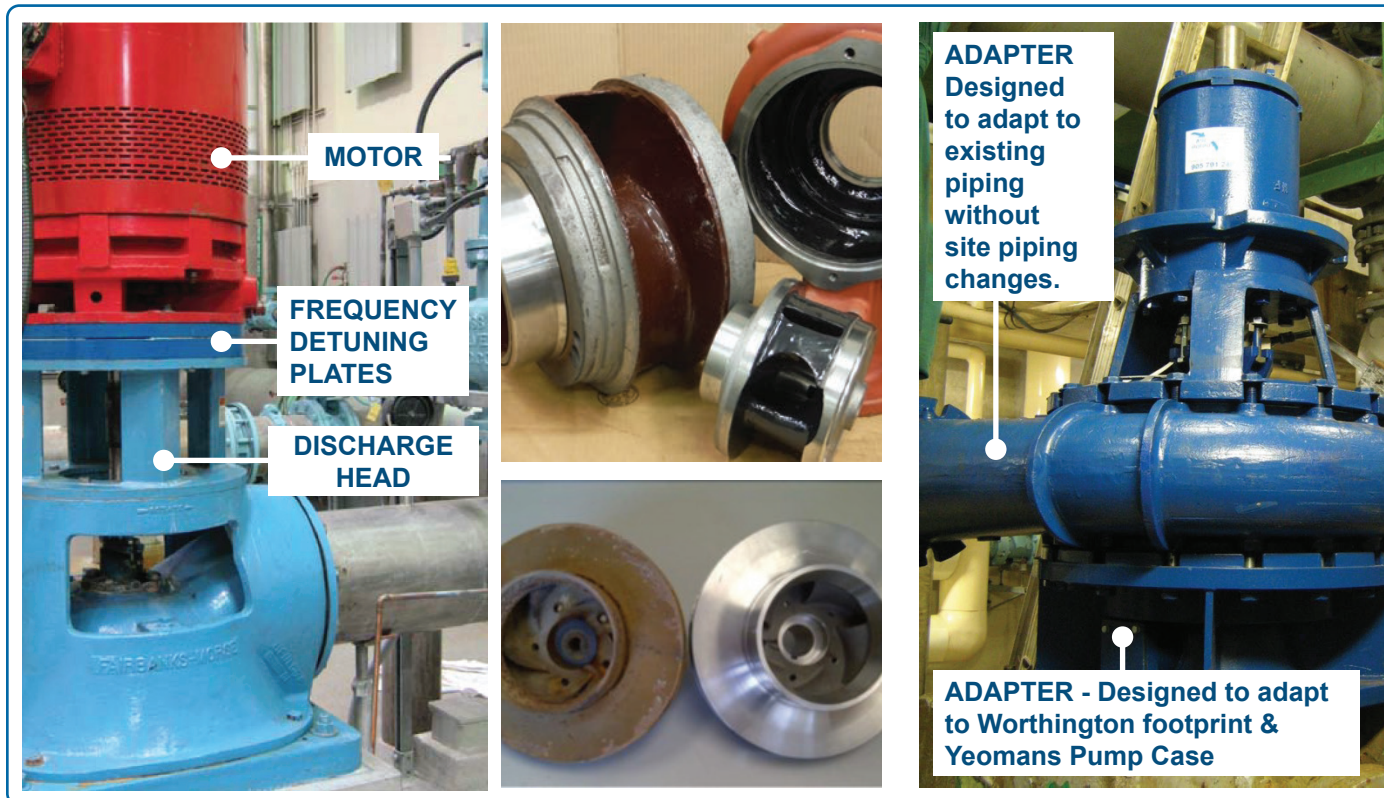
#### Benefits of RAS and Continuous Monitoring

- Analysis performed by Level 3 Certified Analysts
- Optimizes the cost structure of your program
- Maintain program ownership
- Flexible Implementation
- 24/7 Continuous Monitoring
- Alarm Messaging
- Remote Reporting of Customer Data



## TURNKEY SOLUTIONS

ASL Roteq is your one-stop-shop for technical field services, including pump installation and repair, mechanical maintenance, and pumping system solutions. Our internal expertise with unlimited brands and technologies, combined with our ability to pull together all the sub-trades necessary to assess, and solve your unique application challenges with practical and straightforward solutions, makes us the full, turnkey solution for your business.



## TRAINING

Contact us if you are interested in our Director Approved, fully interactive Pump Training Course for Operators, Supervisors, Mechanics and Technicians. Using the Projtech method, this OWWCO CEU Approved training program is designed to provide water and wastewater treatment plant personnel a better understanding of how a pump operates. Participants will leave with an understanding of the interaction between mechanical components and system hydraulics, diagnostic capabilities, pump operation and techniques, root causes of pump failures, mechanical seals and sealing systems. Ideally the participant will also leave with the ability to work with maintenance and engineering to improve pump life and operation efficiency.

### Topics Covered Include:

- Introduction to Hydraulics
- Pump & System Curves
- Loads Placed on a Pump
- Sump Dynamics with Multiple VTP's Installed
- Pump Assembly and Dissassembly Techniques
- Mechanical Seal Operations and Assemblies
- Seal Flush Plans and their Purpose



ASLSB-012921